





Table of Contents

Introduction 4

Features 5

Package Contents 5

System Requirements..... 5

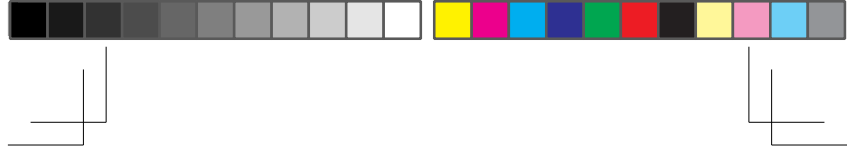
Product Overview 6

Panel 6

Installation Verification 7



This document contains proprietary information protected by copyright. All right are reserved. No part of this manual may be reproduced by any mechanical, electronic or other means, in any form, without prior written permission of the manufacturer.



Trademarks

All trademarks and registered trademarks are the property of their respective owners or companies.

Introduction

USB 3.2 Gen 1 7-Port Hub with power is the ideal solution for transferring data between your computer and external USB storage devices. The main feature of USB 3.2 Gen 1 7-Port Hub is that it is equipped with two power supply ports (BC1.2 Charging ports) and provides power saving mode (five normal ports). Furthermore, USB 3.2 Gen 1 7-Port Hub guarantees the electric current stability and the effective operation of connected USB devices. It does not require any software or any installation process. With a portable design, it can save you desk space.





Features

- Provides USB 3.2 Gen 1 7-port hub design
- Backward compatibility with USB 2.0 specification
- Supports Low speed (1.5 Mbps)/Full speed (12 Mbps)/High speed (480 Mbps)/Super speed (5 Gbps)
- Supports auto switching between self-power and bus-power mode
- Supports most popular smart phones charging

Package Content

- | | |
|----------------------------|-------------------------|
| ■ USB 3.2 Gen 1 7-Port Hub | x1 |
| ■ USB 3.2 Gen 1 Cable | x1 |
| ■ User's Manual | x1 |
| ■ Power Adapter | x1 |
| ■ Power Cord | x1(12V/3A Adapter only) |

System Requirements

- Works with Windows 10
- Mac OS X 10.8.





Product Overview



Panel

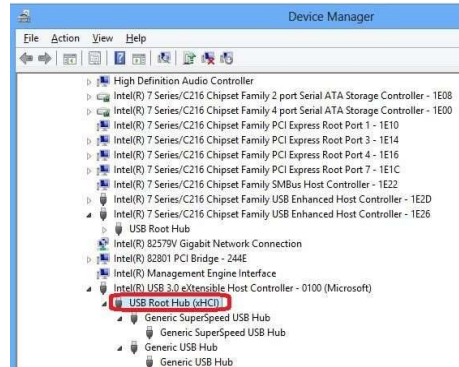
Item	Description
1 DC Power Jack	Connect to the supplied power adapter.
2 USB 3.2 Gen1 Charging Port	Connect to an USB device. (two BC1.2 Charging ports)
3 USB 3.2 Gen1 Input	Connect to a computer.
4 LED indicator	On
5 USB 3.2 Gen1 Output	Connect to an USB device (5 ports)



Installation Verification

Please connect this hub to a PC by an USB 3.2 Gen1 cable. The system will detect the device and install the required drivers automatically. After the installation is finished, you can go to **Device Manager** to verify the entire installation.

In Windows, expand the item of **Universal Serial Bus Controller**, the device will be displayed on the list when the device is working properly.





Note: If there is a (question) or (exclamation) mark next to that item, then the hub is not properly installed. Please delete the item, unplug the hub and re-plug again.

For Mac, search the item of **USB** under **System Report**.

On Mac OS X 10.8:

Follow the path as below to open the **Hardware List**:
Apple Menu on the top corner**About This Mac****More Info****System Report****USB****USB 3.0 SuperSpeed Bus**

