



Datenblatt - Fiche technique - Data sheet

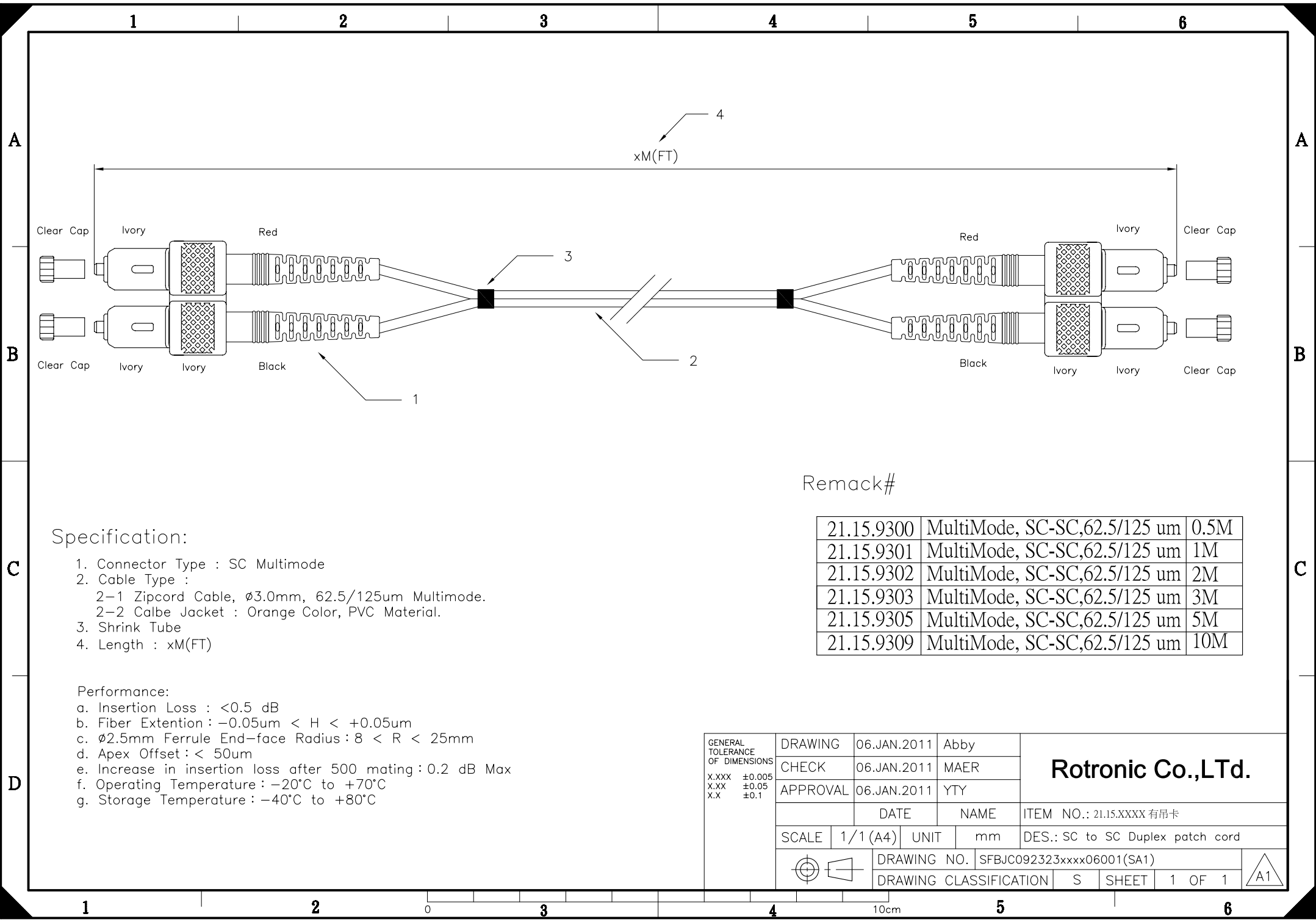
**21.15.9305**



ROLINE LWL-Kabel 62,5/125 $\mu$ m SC/SC, orange, 5m

ROLINE Câble patch FO 62,5/125 $\mu$ m SC/SC, orange, 5m

ROLINE Fibre Optic Jumper Cable 62.5/125 $\mu$ m SC/SC, orange, 5 m



Specification:

- 1. Connector Type : SC Multimode
- 2. Cable Type :
  - 2-1 Zipcord Cable,  $\phi 3.0\text{mm}$ , 62.5/125um Multimode.
  - 2-2 Calbe Jacket : Orange Color, PVC Material.
- 3. Shrink Tube
- 4. Length : xM(FT)

Performance:

- a. Insertion Loss :  $< 0.5 \text{ dB}$
- b. Fiber Extention :  $-0.05\mu\text{m} < H < +0.05\mu\text{m}$
- c.  $\phi 2.5\text{mm}$  Ferrule End-face Radius :  $8 < R < 25\text{mm}$
- d. Apex Offset :  $< 50\mu\text{m}$
- e. Increase in insertion loss after 500 mating :  $0.2 \text{ dB Max}$
- f. Operating Temperature :  $-20^\circ\text{C}$  to  $+70^\circ\text{C}$
- g. Storage Temperature :  $-40^\circ\text{C}$  to  $+80^\circ\text{C}$

Remack#

21.15.9300	MultiMode, SC-SC,62.5/125 um	0.5M
21.15.9301	MultiMode, SC-SC,62.5/125 um	1M
21.15.9302	MultiMode, SC-SC,62.5/125 um	2M
21.15.9303	MultiMode, SC-SC,62.5/125 um	3M
21.15.9305	MultiMode, SC-SC,62.5/125 um	5M
21.15.9309	MultiMode, SC-SC,62.5/125 um	10M

GENERAL TOLERANCE OF DIMENSIONS X.XXX $\pm 0.005$ X.XX $\pm 0.05$ X.X $\pm 0.1$	DRAWING	06.JAN.2011	Abby	<b>Rotronic Co.,Ltd.</b>
	CHECK	06.JAN.2011	MAER	
	APPROVAL	06.JAN.2011	YTY	
	DATE		NAME	ITEM NO.: 21.15.XXXX 有吊卡
SCALE	1/1 (A4)	UNIT	mm	DES.: SC to SC Duplex patch cord
		DRAWING NO. SFBJC092323xxxx06001(SA1)		
		DRAWING CLASSIFICATION	S	