



The Neutron Series

Distributed Network Management Solution

Flexible, Scalable, Enterprise-Class Management for Networks Both Large and Small

Today's networks must be flexible, robust and as effective as the organizations they serve. Often comprised of different sizes, infrastructures and locations, these distributed networks can place an enormous burden on in-house IT personnel or managed service providers looking to manage, monitor and upgrade a potentially vast number of Access Points and Switches.

Fortunately, EnGenius has the answer: the **Neutron Series Distributed Network Management Solution**.

This highly flexible, scalable, fully integrated solution offers simplified configuration and management with enterprise-class performance, feature-rich Managed Access Points, WLAN Controller Switches and ezMaster™ Centralized Network Management, at an incredible price point – **with NO AP licensing, subscription or tech support fees**.

The Neutron Series is ideal for deploying into:

- > Managed Service Providers (MSPs)
- > The Public Sector
- > School Districts
- > Large, Geographically Diverse Organizations
- > Healthcare Facilities
- > Hotels & Resorts

Features and Benefits

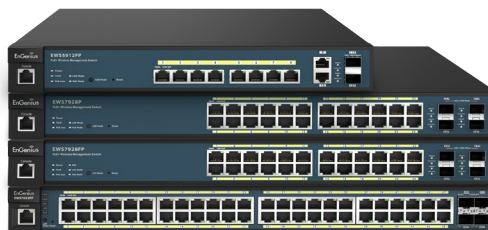
- > Complete Scalability
 - Manage 1 – 1,000+ APs & Switches
 - 10,000+ Concurrent Users
 - Unlimited Number of Distributed Networks
- > Unlimited Flexibility
 - Operate Neutron APs Standalone or Managed
 - Locally Manage up to 50 APs per Switch
 - Manage Unlimited APs & Switches with ezMaster™
 - Deploy ezMaster via Cloud-Based* Service, on a Remote or Local Server
- > Greater Affordability
 - NO AP Licensing, NO Annual Subscriptions, NO Technical Support Fees
 - Affordable Hardware
 - Save Time & Resources
 - Lower TCO per Deployment
- > Neutron Series Distributed Network Management
 - Centralized Management with ezMaster
 - Full Featured WLAN Controller Switches
 - Versatile Access Point Portfolio
- > Optimize Wireless Performance
- > Create Secure, Branded Captive Portals
- > Simplified Deployment & Provisioning
- > Comprehensive Network Protection
- > Rich Reporting & Analytics
- > Enterprise-Class Performance
- > Comprehensive Pre/Post Sales & Customer Support

*Feature available 2016

The EnGenius® Neutron™ Series Distributed Network Management Solution includes:



Neutron Managed Access Points



Neutron WLAN Controller Switches

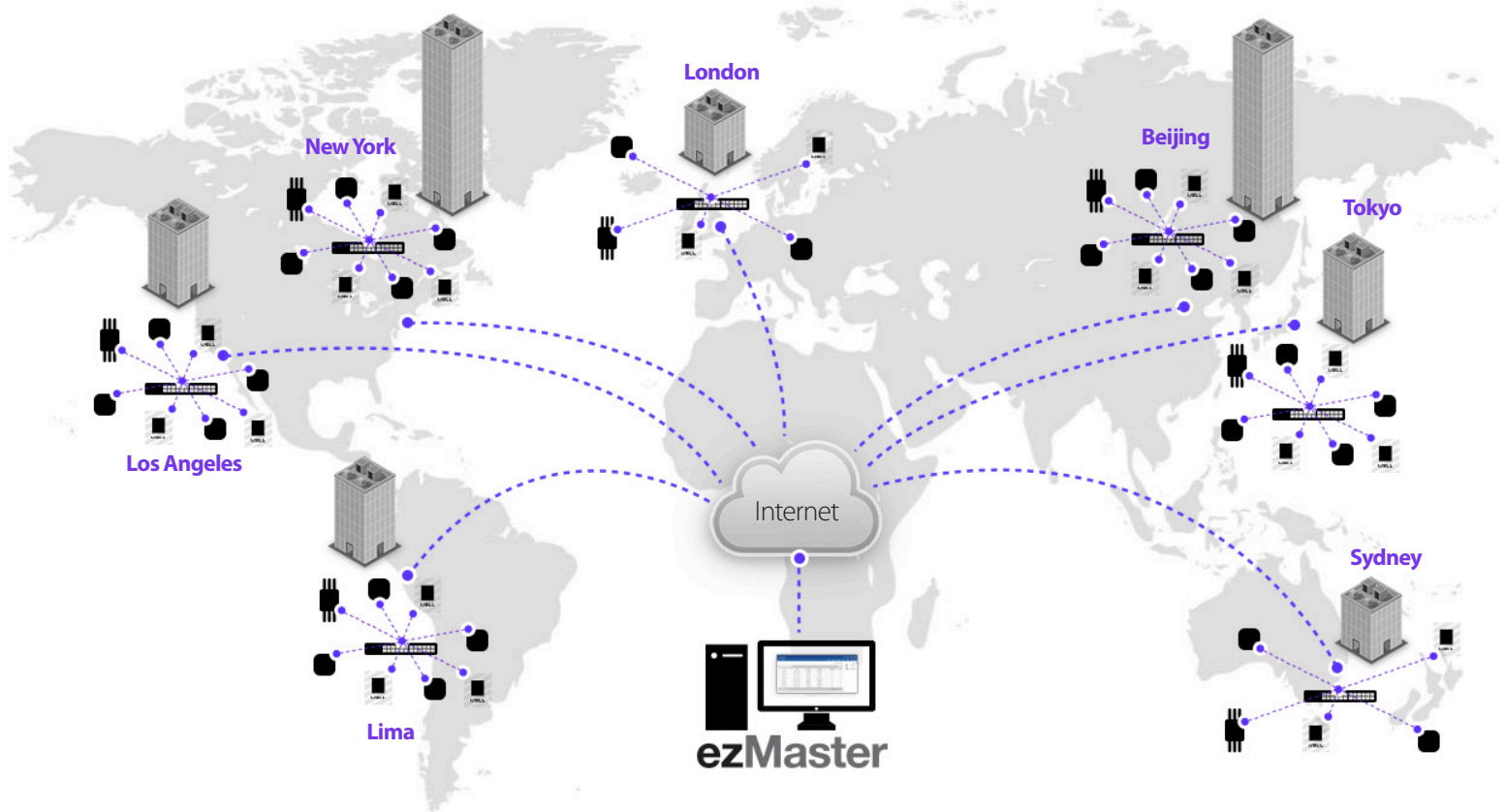


ezMaster™ Network Management Software

Complete Scalability Regardless of Size

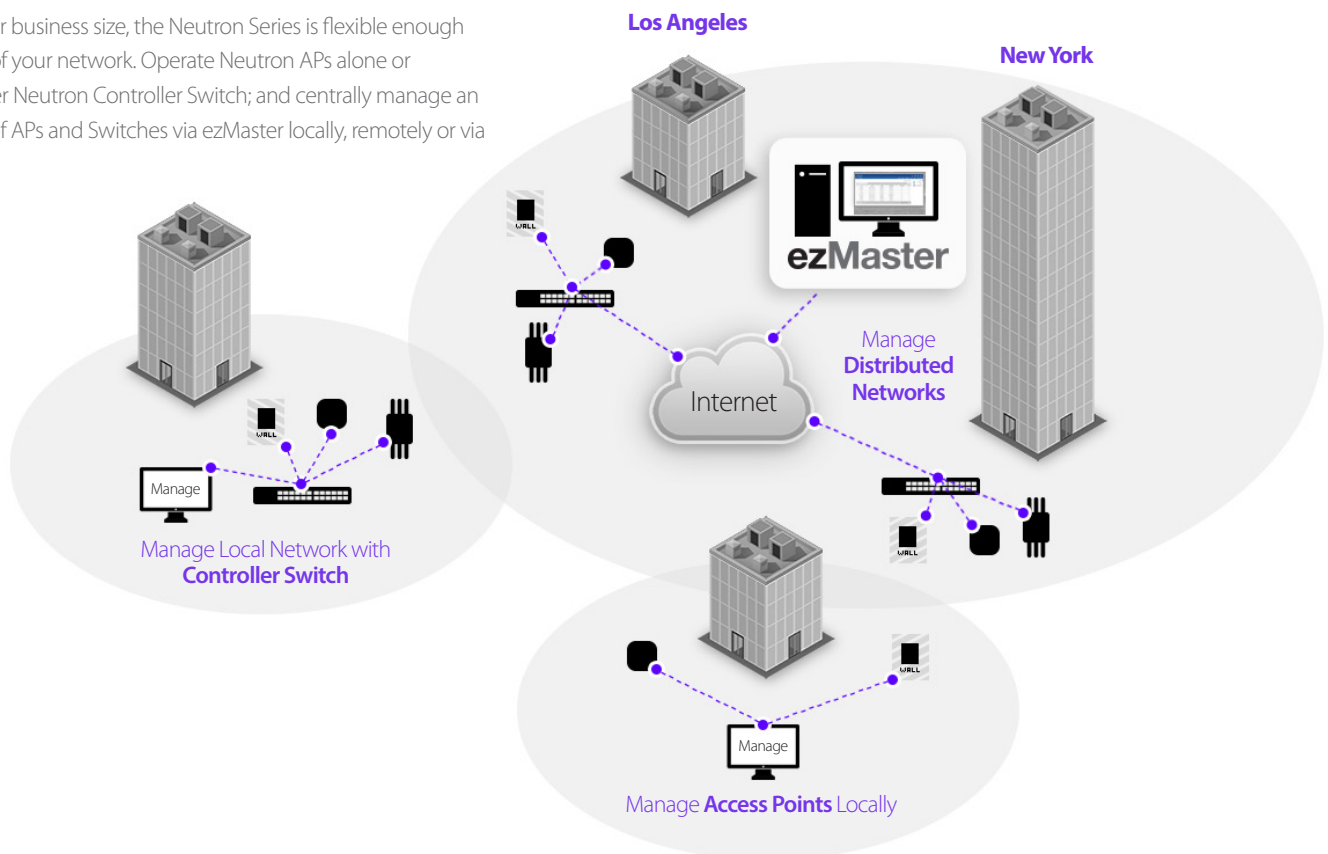
Want to start small or go big? You can do both with the Neutron Series. The Solution makes it easy to deploy and manage a few or 1,000+ APs, and

Switches and 10,000+ concurrent users on an unlimited number of networks distributed across various cities, regions or countries, regardless of their size and infrastructure.



Unlimited Flexibility

No matter what your business size, the Neutron Series is flexible enough to meet the needs of your network. Operate Neutron APs alone or manage up to 50 per Neutron Controller Switch; and centrally manage an unlimited number of APs and Switches via ezMaster locally, remotely or via the Cloud.



Enjoy Lower Capital & Operating Expenses

Many competing solutions require costly hardware, per AP licensing, and annual subscription and tech support fees. Not with the Neutron Series.

Since it's also easy to deploy, manage and operate, you'll save valuable time and resources, all translating to affordable, predictable costs – and a lower TCO per deployment.

The Price Paid Over One Year for 25 APs

Compare	EnGenius Hybrid Solution	Controller-based Vendor	Cloud-based Vendor
Access Points	11ac 3x3 : 3 Streams EWS360AP \$599	11ac 3x3 : 3 Streams \$795	11ac 3x3 : 3 Streams \$1,399
HW Controller	0	1	0
Subscription	0	0	\$3,750 per year
License	0	\$4,000	0
Firmware Upgrade	0	\$3,600	0
Total Cost (USD)	\$14,975	\$27,475	\$38,725

Features & Benefits

The Neutron Series delivers enterprise-class features that simplify deployment and management, maximizing wireless performance for any size network, no matter where it's located.

Optimized Wireless Performance

Continuously monitor the RF environment, including neighboring APs, with **Background Scanning**, and enable **automatic** control of AP **transmission power** and **channel allocation** ensuring optimized RF coverage and wireless performance. Configure multiple APs for **Fast Roaming**, securing seamless connectivity as mobile users move between Access Points.

Provide for maximum client performance as **Band Steering** automatically directs clients to the appropriate RF channel, while **Band Balancing** intelligently works to maintain a balanced number of clients per AP.

Distributed Control, Centralized Management with ezMaster™

Centrally manage an **unlimited number** of independent **distributed networks** from a single, at-a-glance dashboard, no matter where they're located. **Manage 1,000+** Neutron APs and Controller Switches and **10,000+** concurrent users.

EzMaster makes centralized network management easy through bulk configuration, provisioning and monitoring; rich analytics, reporting, and much more. Monitor APs with or without an onsite Controller Switch, and have the flexibility to **deploy** ezMaster on a **local** or **remote** server or via a **Cloud**-based service.

Simplified Deployment & Provisioning

Save time and resources with Neutron Series' easy-to-use **web interface**, **simplified management** and **one-click updates**. **Automated AP provisioning** and **intuitive configuration tools** help streamline mass AP deployments. And since the Neutron Series is easy to deploy, manage and operate, with **no extensive learning curve**, you'll spend less on administrative overhead, travel costs and training.

Neutron Controller Switches, A Full-Featured WLAN Platform

A powerful, **full-featured platform** capable of **managing up to 50 Neutron APs** each, Neutron Controller Switches offer redundant management between APs and ezMaster with **SmartSync Redundancy***; and **future expandability** for broader device connectivity and management. Neutron Switches also act as a **wireless controller**, giving IT administrators visibility into all connected Neutron devices and a full array of **Layer 2 management tools**.

Versatile AP Portfolio Features High-Capacity 11ac

Neutron's versatile line of high-performance, managed, **indoor ceiling-mount** and **outdoor ruggedized APs** range from **Single-Band 11n** models to **high-capacity 3x3 Dual-Band 11ac** versions, all featuring **Power-over-Ethernet (PoE)** convenience. For added versatility, Neutron APs can **operate as a standalone device**, be **managed** through a Neutron Controller Switch or centrally managed via ezMaster software.

Create Secure, Branded Captive Portals

Organizations that offer Internet access to patrons or visitors – notably hotels, retail shops and restaurants – will appreciate Neutron's **Captive Portal** and Guest Network capabilities.

Establish a secure **Guest Network** that blocks access to main corporate computers and create separate Virtual LANs for increased security, network reliability and bandwidth conservation.



Comprehensive Network Protection

With the Neutron Series, your network is protected from attacks at multiple levels through advanced wireless encryption standards such as Wi-Fi **Protected Access Encryption** and authentication database, **802.1X** with **RADIUS** server. Network threats are quickly detected and avoided through **rogue AP detection**, **email alerts** and **real-time wireless invasion monitoring**, allowing for immediate action to divert network hacks and other security threats.

*Feature available Q1 2016

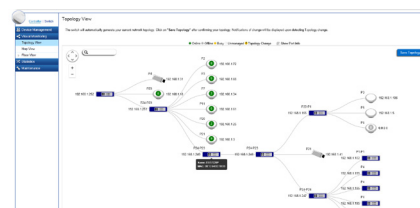
Rich Reporting & Analytics

A wealth of invaluable reporting, analytics and real-time monitoring tools, with email alerts, give IT management instant insight into system efficiencies and issues. With tools like **wireless client monitoring**, and **traffic** and **usage statistics**, potential problems can be pinpointed and addressed before they effect users. Neutron provides **centralized network visibility** in areas such as **traffic flow**, **demand**, **network topology** and more.

- > **Statistics View** provides real-time and historical visibility of traffic flow.



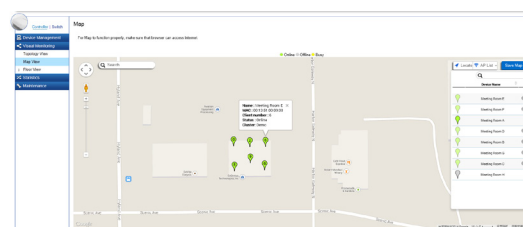
- > **Topology View** automatically maps network deployment and displays device relationships.



- > **Floor View** allows administrators to upload floor plans and drop AP markers for a visual representation of any network on the system.



- > With **Google® Map View** you can quickly drop AP markers and locate deployed APs across cities, regions or countries.



Perfect Flexibility for Managed Service Providers

If you're a managed service provider (MSP) the EnGenius Neutron Series is ideal for you. Easily provision, configure, manage and update network devices for all of your customers – from a single console and login, regardless of network size, location, infrastructure or ISP. Saving you a tremendous amount of time, travel and cost.

Flexible Distributed Network Management

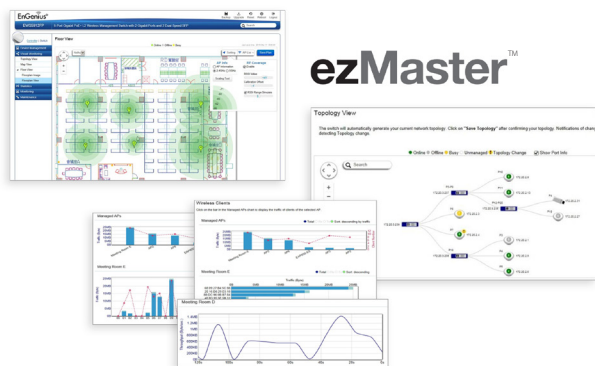
EzMaster Network Management Software expands the flexibility and scalability of Neutron Series Managed Access Points and WLAN Controller Switches.

EzMaster allows organizations, such as branch offices and managed service providers, to easily and affordably deploy, monitor and manage a large number of Neutron APs and Controller Switches across geographically diverse properties. Centrally manage an unlimited number of independent distributed networks in the same subnet or cross-subnet from a single, at-a-glance network dashboard, no matter where they're located.

Deploy ezMaster locally, remotely or via a Cloud-based service with or without an onsite WLAN Controller Switch.

Powerful, Scalable Options

EzMaster scales with your growing business needs. Manage 1,000+ Neutron Access Points and Controller Switches and 10,000+ concurrent users. Together, Neutron APs, Switches and ezMaster provide a flexible, fully integrated solution with redundancy support and future expandability for broader device connectivity.



System Requirements

Recommended environment for managing up to 500 APs

CPU: Intel® Core™ i3 3.6 GHz dual-core or above

RAM: 4 GB minimum

HDD: 500 GB (actual requirement dependent on log size)

OS: Microsoft® Windows® 7 or later + VMware® Player 7.0 or compatible virtualization software

Recommended environment for managing up to 1,000+ APs

CPU: Intel® Core™ i5 3.2 GHz quad-core or above

RAM: 4 GB minimum

HDD: 500 GB (actual requirement dependent on log size)

OS: Microsoft® Windows® 7 or later + VMware® Player 7.0 or compatible virtualization software

Browser Requirements

Internet Explorer 10 or better

Firefox 34.0 or better

Chrome 31.0 or better

Safari 8.0 or better

Network Topology Requirements

At sites where APs are deployed: A DHCP-enabled network for APs to obtain an IP address

Simplified Device Management

EzMaster Network Management Software makes centralized device management easy. How? Through centralized bulk configuration, provisioning and monitoring, a comprehensive at-a-glance network dashboard, rich analytics and reporting, and much more.

ezMaster™ Software Features

> Centralized Management

- Configure, Managed & Monitor 1,000+ Neutron Devices
- Cross-Network AP Management
- AP Group Configuration

> Access Point Configuration & Management

- Auto Channel Selection
- Auto Tx Power
- Background Scanning
- Band Steering (Auto Band Steering & Band Balancing)
- Client Isolation
- Client Limiting
- Fast Roaming
- L2 Isolation
- LED On/Off Control
- Multiple SSID
- RSSI Threshold
- Secure Guest Network
- Traffic Shaping
- VLAN Isolation
- VLAN Tag

> Comprehensive Monitoring

- Device Status Monitoring
- Floor Plan View
- Map View
- Rogue AP Detection
- System Status Monitoring
- Visual Topology View
- Wireless Client Monitoring
- Wireless Coverage View
- Wireless Traffic & Usage Statistics

> Management & Maintenance

- Bulk Firmware Upgrade
- Captive Portal
- Email Alert
- ezRedundancy (coming 2016)
- Kick/Ban Clients
- One-Click Update
- Remote Logging
- Seamless Migration
- SmartSync Redundancy (coming 2016)
- Syslog

Complete Line of the Neutron Series Products






Managed Access Points

Model	Description
EWS300AP	Single-Band 11n 2x2:2 2.4 GHz Ceiling-Mount Wireless Managed Indoor Access Point
EWS310AP	Dual-Band 11n 2x2:2 Ceiling-Mount Wireless Managed Indoor Access Point
EWS320AP	Dual-Band 11n 3x3:3 Ceiling-Mount Wireless Managed Indoor Access Point
EWS350AP	Dual-Band 11ac 2x2:2 Ceiling-Mount Wireless Managed Indoor Access Point
EWS360AP	Dual-Band 11ac 3x3:3 Ceiling-Mount Wireless Managed Indoor Access Point
EWS500AP	Single-Band 11n 2x2:2 Wall Plate Wireless Managed Indoor Access Point
EWS510AP	Dual-Band 11n 2x2:2 Wall Plate Wireless Managed Indoor Access Point
EWS650AP	Dual-Band 11ac 2x2:2 Wireless Managed Outdoor Access Point
EWS660AP	Dual-Band 11ac 3x3:3 Wireless Managed Outdoor Access Point
EWS860AP	Dual-Band 11ac 3x3:3 Wireless Ruggedized Managed Outdoor Access Point

WLAN Controller Switches

Model	Description
EWS2910P	8-Port GigE 61W PoE WLAN Controller/Switch – Manage up to 20 Access Points
EWS2910P-KIT-300	WLAN Starter Kit (1) 8-Port GigE 61W PoE WLAN Controller/Switch – Manage up to 20 APs; (2) EWS300AP Single-Band 11n 2x2:2, 2.4 GHz Ceiling-Mount Wireless Access Points
EWS5912FP	8-Port GigE 130W PoE+ WLAN Management Controller / Switch - Manage up to 50 Access Points
EWS7928P	24-Port GigE 185W PoE+ WLAN Management Controller / Switch - Manage up to 50 Access Points
EWS7928FP	24-Port GigE 370W PoE+ WLAN Management Controller / Switch - Manage up to 50 Access Points
EWS7952FP	48-Port GigE 740W PoE+ WLAN Management Controller / Switch - Manage up to 50 Access Points

EnGenius Neutron Series WLAN Controller Switches

					
Models	EWS7952FP	EWS7928FP	EWS7928P	EWS5912FP	EWS2910P
Supported EWS AP	50	50	50	50	20
10/100/1000 Base-T, PoE+	48	24	24	8	8
Total PoE Budget	740W	370W	185W	130W	61.6W
PoE+ Capable Port	1-48	1-24	1-24	1-8	1-8 (802.3af only)
Rackmount	19" 1U	19" 1U	19" 1U	13" 1U	9.45" (desktop)
SFP Ports	4	4	4	2	2
Auto Uplink Gigabit Ports	-	-	-	●	-
RJ45 Console Port	●	●	●	●	-
Annual License Fee Per AP	\$0	\$0	\$0	\$0	\$0

Key Features

- > Access Point Auto Discovery & Provisioning
- > Access Point Auto IP-Assignment
- > Access Point Cluster Management
- > Visual Topology View
- > Floor Plan & Map View
- > Wireless Coverage Display
- > Access Point Status Monitoring
- > Wireless Client Monitoring
- > Wireless Traffic & Usage Statistics
- > Real-time Throughput Monitoring
- > Bulk Firmware Upgrade Capability
- > Remote Access Point Rebooting
- > Fast Roaming
- > Fast Handover
- > Band Steering
- > Traffic Shaping
- > Intelligent Diagnostics
- > Access Point Device Name Editing
- > Access Point Radio Settings
- > Access Point Client Limiting
- > Wireless Security (WEP, WPA/WPA2 Enterprise, WPA/WPA2 PSK)

Neutron Series WLAN Controller Switches

A Full-Featured Platform

EnGenius Neutron Series Controller Switches are a powerful, full-feature platform capable of managing up to 50 Neutron Managed Access Points per Switch, while providing future expandability for broader device connectivity and redundant management between Neutron APs and ezMaster with SmartSync Redundancy.

Acting as a **wireless network controller**, Neutron Controller Switches give IT administrators visibility into all Neutron Series connected devices. This allows them to be grouped into clusters with the same settings and policies applied automatically.

Available in 8-, 24- and 48-port models, each Neutron Series Controller Switch supports **Power-over-Ethernet** (PoE), delivering up to 30 watts per port for powering devices like APs, IP Cameras, and VoIP (Voice-over-IP) phone systems. Neutron Controller Switches also provide improved network efficiency, security, and AP management through **full Layer 2 management** tools.

When combined with ezMaster, Neutron Controller Switches support **SmartSync Redundancy**, which stores network analytic data even when Internet connectivity is not available. Once connectivity is restored, the Controller Switch will automatically re-synch and send analytics to ezMaster, meanwhile, the network itself would remain running the entire time.

Technical Specifications

Switching Capacity EWS2910P: 20 Gbps EWS5912FP: 24 Gbps EWS7928P: 56 Gbps EWS7928FP: 56 Gbps EWS7952FP: 104 Gbps	LED Indicators 1 x Power LED 1 x Fault LED 1 x PoE Max LED 1 x LAN Mode LED 1 x PoE Mode LED Copper Ports: LAN/PoE Mode, Link/Act SFP Ports: Link/Act, Speed (EWS2910P & EWS7952FP only)	L2 Features 802.3ad Link Aggregation Port Mirroring Port Trunking Spanning Tree Protocol > 802.1D Spanning Tree (STP) > 802.1w Rapid Spanning Tree (RSTP) > 802.1s Multiple Spanning Tree (MSTP) IGMP Snooping v1/v2/v3 IGMP Fast Leave VLAN Group Voice VLAN MLD Snooping Bandwidth Control Queue > 802.1w Rapid Spanning Tree (RSTP) > CoS-based on 802.1p Priority > CoS-based on TOS > CoS-based on DSCP > CoS-based on Physical Port 802.1X Port-based Access Control 802.1X Guest VLAN Port Security Storm Control Port Isolation Attack Prevention Access Control List (ACL) PoE Management > Power On/Off Per Port > Power Class Configuration > Power Feeding with Priority > User Defined Power Limit IEEE 802.3az (Energy Efficient Ethernet) SSH Server Telnet Server TFTP Client TFTP Upgrade BootP/DHCP Client Web-based Support SNMP v1 / v2c / v3 Support Command Line Interface (CLI) SNTP RMONv1 SYSLOG Cable Diagnostics MIB Support > RFC1213 / RFC1493 / RFC1757 / RFC2674
Forwarding Mode Store and Forward	Wireless Management Features (with Neutron Series Access Points & ezMaster) EWS2910P : Manages up to 20 Neutron Series APs EWS5912FP / EWS7952FP / EWS7928P / EWS7928FP : Manage up to 50 Neutron Series APs Access Point Auto Discovery and Provisioning Access Point Auto IP Assignment Access Point Cluster Management Remote Access Point Rebooting Access Point Device Name Editing Access Point Radio Settings Band Steering Traffic Shaping Fast Handover Fast Roaming Access Point Client Limiting Client Fingerprinting Wireless Security (WEP, WPA/WPA2 Enterprise, WPA/WPA2 PSK) AP VLAN Management VLANs for Access Point- Multiple SSIDs Secured Guest Network Captive Portal Access Point Status Monitoring Rogue AP Detection Wireless Client Monitoring Background Scanning Email Alert Wireless Traffic & Usage Statistics Real-time Throughput Monitoring SmartSync Redundancy Visual Topology View Floor Plan View Map View Wireless Coverage Display Secure Control Messaging (SSL Certificate) Local MAC Address Database Remote MAC Address Database (RADIUS) Unified Configuration Import / Export Bulk Firmware Upgrade Capability One-Click Update Intelligent Diagnostics Kick/Ban Clients	
SDRAM 256MB		
Flash Memory 32MB		
Port Functions EWS2910P 8 x 10/100/1000 Mbps Ports in the front panel 2 x 100/1000 Mbps SFP Slot EWS5912FP 8 x 10/100/1000 Mbps Ports in the front panel 2 x 100/1000 Mbps SFP Slot 2 x Gigabit Uplink Ports 1 x RJ45 Console Port EWS7928FP / EWS7928P 24 x 10/100/1000 Mbps Ports in the front panel 4 x 100/1000 Mbps SFP Slot 1 x RJ45 Console Port EWS7952FP 48 x 10/100/1000 Mbps Ports in the front panel 4 x 100/1000 Mbps SFP Slot 1 x RJ45 Console Port		
PoE Capability EWS2910P PoE Standard: Ports 1~8 Support IEEE 802.3af EWS5912FP PoE Standard: Ports 1~8 Support IEEE 802.3at/af EWS7928FP / EWS7928P PoE Standard: Ports 1~24 Support IEEE 802.3at/af EWS7952FP PoE Standard: Ports 1~48 Support IEEE802.3at/af		
PoE Capable Ports EWS2910P Ports 1~8 Can Output Up to 15W EWS5912FP Ports 1~8 Can Output Up to 30W EWS7928P All Gigabit Ethernet Ports / Up to 30W EWS7928FP All Gigabit Ethernet Ports / Up to 30W EWS7952FP All Gigabit Ethernet Ports / Up to 30W		

Technical Specifications continued

Temperature Range
EWS2910P
Operating: 32°F to 104°F (0°C to 40°C)
Storage Temperature: -40°F to 158°F (-40°C to 70°C)
EWS5912FP / EWS7928P / EWS7928FP / EWS7952FP
Operating: 32°F to 122°F (0°C to 50°C)
Storage Temperature: -40°F to 158°F (-40°C to 70°C)
Humidity (non-condensing)
Operating: 5% - 95%
Certifications
FCC, IC, CE
Device Dimensions and Weights
EWS2910P
Weight: 1.36 lbs. (620 g)
Width: 9.45" (240 mm)
Length: 4.13" (105 mm)
Height: 1.06" (27 mm)

Device Dimensions and Weights continued
EWS5912FP
Weight: 4.4 lbs. (1.9 kg)
Width: 13.00" (330.20 mm)
Length: 9" (228.60 mm)
Height: 1.73" (43.94 mm)
EWS7928P
Weight: 7.82 lbs. (3.5 kg)
Width: 17.3" (439 mm)
Length: 10.24" (260 mm)
Height: 1.73" (44 mm)
EWS7928FP
Weight: 10.36 lbs. (4.7 kg)
Width: 17.3" (439 mm)
Length: 12.2" (310 mm)
Height: 1.73" (44 mm)

Device Dimensions and Weights continued
EWS7952FP
Weight: 14.15 lbs. (6.4 kg)
Width: 17.32" (439.9 mm)
Length: 16.14" (409.9 mm)
Height: 1.73" (43.9 mm)
Warranty
1-Year Standard

EnGenius Neutron Series Indoor Managed Access Points

							
	CEILING MOUNT					WALL PLATE	
Models	EWS360AP	EWS350AP	EWS320AP	EWS310AP	EWS300AP	EWS510AP	EWS500AP
Standards	802.11a/b/g/n/ac	802.11a/b/g/n/ac	802.11a/b/g/n	802.11a/b/g/n	802.11b/g/n	802.11a/b/g/n	802.11b/g/n
Frequency	2.4 & 5 GHz	2.4 & 5 GHz	2.4 & 5 GHz	2.4 & 5 GHz	2.4 GHz	2.4 & 5 GHz	2.4 GHz
2.4 GHz Max. Data Rate	450 Mbps	300 Mbps	450 Mbps	300 Mbps	300 Mbps	300 Mbps	300 Mbps
5 GHz Max. Data Rate	1,300 Mbps	867 Mbps	450 Mbps	300 Mbps	N/A	300 Mbps	300 Mbps
Radio Chains/Streams	3 x 3:3	2 x 2:2	3 x 3:3	2 x 2:2	2 x 2:2	2 x 2:2	2 x 2:2
RF Output Power (2.4 GHz)	15 dBm	15 dBm	15 dBm	15 dBm	15 dBm	15 dBm	15 dBm
RF Output Power (5 GHz)	15 dBm	15 dBm	15 dBm	15 dBm	N/A	15 dBm	N/A
Ethernet Ports	1 x Gig Port (PoE+)	1 x Gig Port (PoE+)	1 x Gig Port (PoE+)	1 x Gig Port (PoE+)	1 x Gig Port (PoE+)	- 1 x 10/100 Mbps Access Port (PoE+) - 3 x 10/100 Mbps Access Ports - 1 x Gig Uplink Port (PoE) - 1 x RJ45 Pass Through Ports	- 1 x 10/100 Mbps Access Port (PoE+) - 3 x 10/100 Mbps Access Ports - 1 x Gig Uplink Port (PoE) - 2 x RJ45 Pass Through Ports
110 Punch Down Block	-	-	-	-	-	1	1
Power-over-Ethernet	802.3at	802.3at	802.3at	802.3af/at	802.3af	802.3af/at	802.3af/at
Power Consumption (Peak)	22.8W	18W	18.2W	15.6W	9.6W	10.8W	7.5W
Integrated Antenna	6 x 5 dBi	4 x 5 dBi	6 x 5 dBi	4 x 5 dBi	2 x 5 dBi	2 x 4 dBi (2.4 GHz) 2 x 5 dBi (5 GHz)	2 x 4 dBi

Key Features

- > Sectorized 3D Antenna (selected models)
- > Dynamic Channel Optimization
- > Dual-Band (select models)
- > Band Steering (Dual-Band models)
- > Seamless Roaming, Fast Handover
- > Supports Connectivity of 100+ Users
- > 16 SSIDs (8 SSIDs per frequency band)
- > Wireless Traffic Shaping
- > QoS
- > SSID-to-VLAN Mapping
- > Email Alert
- > Wi-Fi Scheduler
- > Auto-Reboot
- > AP Detection

Neutron Series Managed Access Points

Versatile Portfolio of Managed Access Points

EnGenius offers one of the broadest Access Point portfolios available. The Neutron Series' versatile line of high-performance, managed indoor and outdoor APs range from **affordable, Single-Band 11n models** to **high-capacity 3x3 Dual-Band 11ac versions**, all with Power-over-Ethernet (PoE) convenience.

Neutron Access Points include sleek, low profile **Indoor Ceiling-Mount APs** and **Wall Plate AP/ Switches** that provide an all-in-one communications hub for hotel guest rooms, and multi-tenant dwellings to powerful, slim line, **IP-rated Outdoor** and **industrial, ruggedized APs** that extend the network beyond. Neutron Managed APs are sure to meet a variety of application needs for both large and small networks alike.

For added versatility, **deploy as a standalone Access Point** or **part of a scalable Neutron Solution** managed via a Neutron Controller Switch or centrally managed with ezMaster software.

Technical Specifications

Frequency <p>EWS310AP / EWS320AP / EWS350AP / EWS360AP / EWS510AP 2.4 and 5 GHz Frequency Bands</p> <p>EWS300AP / EWS500AP 2.4 GHz Frequency Band</p>	Antennas <p>EWS300AP 2 x 5 dBi Internal High Gain Antennas</p> <p>EWS310AP / EWS350AP 2 x 5 dBi 2.4 GHz Internal Antennas 2 x 5 dBi 5 GHz Internal Antennas</p> <p>EWS320AP 3 x 3 dBi 2.4 GHz Internal Antennas 3 x 5 dBi 5 GHz Internal Antennas</p> <p>EWS360AP 3 x 5 dBi 2.4 GHz Internal Antennas 3 x 5 dBi 5 GHz Internal Antennas</p> <p>EWS500AP 2 x 4 dBi Internal Antennas</p> <p>EWS510AP 2 x 4 dBi 2.4 GHz Internal Antennas 2 x 5 dBi 5 GHz Internal Antennas</p>	Power Requirements <p>Power Supply: 100 to 240 VDC \pm 10%, 50/60 Hz (depends on different countries)</p> <p>Active Ethernet (Power-over-Ethernet, IEEE 802.3at/af) EWS300AP Power-over-Ethernet, IEEE 802.3af</p> <p>EWS300AP 12V/1A</p> <p>EWS310AP / EWS320AP / EWS350AP / EWS360AP 12V/2A</p> <p>EWS500AP / EWS510AP 48V/0.8A</p>
Standards <p>EWS300AP / EWS500AP IEEE 802.11b/g/n</p> <p>EWS310AP / EWS320AP / EWS510AP IEEE 802.11a/b/g/n</p> <p>EWS350AP / EWS360AP IEEE 802.11a/b/g/n/ac</p>	Physical Interface <p>1 x RJ45 Gigabit Ethernet 10/100/1000 — PoE Capable 1 x Reset Button, 1 x Power Connector</p> <p>EWS500AP / EWS510AP 1 x 10/100/1000 Mbps Uplink Port with 802.3af/at PoE 3 x 10/100 Mbps Access Ports</p> <p>1 x 10/100 Mbps Access Port with PoE Output (support 802.3af output when PoE input is 802.3at)</p> <p>2 x RJ45 Pass Through Ports 1 x 110 Punch Down Block 1 x DC Power Connector 1 x Reset Button</p>	Modulations <p>OFDM: BPSK, QPSK, 26-QAM (EWS210AP / EWS300AP 16-QAM, 64-QAM, DBPSK, DQPSK, CCK</p>
Radio I <p>11b/g/n: 2.412~2.484 GHz</p>	LED Indicators <p>EWS300AP 1 x Power 1 x WLAN 1 x LAN 1 x 2.4 GHz</p> <p>EWS310AP / EWS320AP / EWS350AP / EWS360AP 1 x Power 1 x WLAN (Wireless Connection) 1 x LAN 1 x 2.4 GHz 1 x 5 GHz</p> <p>EWS500AP / EWS510AP 1 x Power 1 x WAN 1 x 2.4 GHz 1 x 5 GHz (EWS510AP only) 1 x LAN 1-4</p>	Operating Channels <p>2.4 GHz US/Canada 1-11</p> <p>5 GHz (Dual-Band models only): Country dependent for the following ranges: 36, 40, 44, 48, 52, 56, 60, 64, 100, 104, 108, 112, 116, 120, 124, 128, 132, 136, 140, 149, 153, 157, 161, 165</p>
Radio II (Dual-Band models only) <p>11a/n: 5.18-5.24 & 5.26-5.32 & 5.5-5.7 & 5.745-5.825 GHz</p>		Operation Modes <p>Access Point</p>
Data Rates <p>EWS300AP / EWS500AP Up to 300 Mbps in 2.4 GHz frequency band</p> <p>EWS310AP / EWS510AP Up to 300 Mbps in both frequency bands</p> <p>EWS320AP Up to 450 Mbps in both frequency bands</p> <p>EWS350AP Up to 300 Mbps in the 2.4 GHz frequency band; Up to 867 Mbps in the 5 GHz band</p> <p>EWS360AP Up to 450 Mbps in the 2.4 GHz frequency band; Up to 1300 Mbps in the 5 GHz band</p>		Multiple BSSID <p>Supports up to 8 SSIDs Per Radio</p>
Memory <p>EWS300AP 64MB</p> <p>EWS310AP / EWS320AP / EWS350AP / EWS360AP / EWS500AP / EWS510AP 128MB</p>		SSID-to-VLAN Tagging <p>Supports 802.1q SSID-to-VLAN Tagging</p>
Flash Memory <p>16MB</p>		Spanning Tree <p>Supports 802.1d Spanning Tree Protocol</p>
Power Consumption <p>EWS300AP Up to 9.6W</p> <p>EWS310AP Up to 15.6W</p> <p>EWS320AP Up to 18.2W</p> <p>EWS350AP Up to 18W</p> <p>EWS360AP Up to 22.8W</p> <p>EWS500AP Up to 7.5W</p> <p>EWS510AP Up to 10.8W</p>		Wireless <p>EWS300AP / EWS500AP Wireless Mode: 11b/11g/11n</p> <p>EWS310AP / EWS320AP / EWS510AP Wireless Mode: 11a/11b/11g/11n</p> <p>EWS350AP / EWS360AP Wireless Mode: 11a/11b/11g/11n/11ac</p> <p>Channel Selection (settings vary by country)</p> <p>Channel Bandwidth (Auto, 20 MHz, 40 MHz, 80 MHz)</p>
		Transmission Rate <p>2.4 GHz 11n only, 11b/b/n mix, 11b only, 11b/g, 11g only</p> <p>5 GHz (Dual-Band models only): 11ac only, 11n only, 11a/n mix, 11a only</p>




Technical Specifications continued

QoS
WMM (Wireless Multimedia)
Wireless Management Features (with ezMaster & Neutron Switch)
Access Point Auto Discovery and Provisioning
Access Point Auto IP Assignment
Access Point Cluster Management
Remote Access Point Rebooting
Access Point Device Name Editing
Access Point Radio Settings
Band Steering (Dual Band models only)
Traffic Shaping
Fast Handover
Fast Roaming
RSSI Threshold
Access Point Client Limiting
Client Fingerprinting
Wireless Security (WEP, WPA/WPA2 Enterprise, WPA/WPA2 PSK)
AP VLAN Management
VLANs for Access Point- Multiple SSIDs
Secured Guest Network
Captive Portal
Access Point Status Monitoring
Rogue AP Detection
Wireless Client Monitoring
Background Scanning
Email Alert
Wireless Traffic & Usage Statistics
Real-time Throughput Monitoring
SmartSync Redundancy
Visual Topology View
Floor Plan View
Map View
Wireless Coverage Display
Secure Control Messaging (SSL Certificate)
Local MAC Address Database
Remote MAC Address Database (RADIUS)
Unified Configuration Import / Export
Bulk Firmware Upgrade Capability
One-Click Update
Intelligent Diagnostics
Kick/Ban Clients
Tx Power Control
Adjust Transmit Power by dBm
Configuration
Web-based Configuration (http)
Firmware Upgrade
Via Web Browser

Administrator Setting
Administrator Username and Password Change
MIB
MIB I, MIB II (RFC1213) and private MIB
System Monitoring
Status Statistic and Event Log
SNMP
V1 / V2c / V3
Traffic Shaping
Incoming and Outgoing Wireless Traffic Shaping
Reset Setting
Reboot (press and hold for 2 seconds). Reset to Factory Default (press and hold for 10 seconds)
Auto-Channel Selection
Automatically Selecting Least Congested Channel
Bandwidth Measurement
IP Range and Bandwidth Management
Schedule Reboot
Reboot Access Point by Minute, Hour, Day, or Week
Backup and Restore
Save and Restore Settings via Web Interface
CLI
Supports Command Line Interface
Diagnosis
IP Pinging Statistics
Log
SysLog and Local Log Support
LED Control
On/Off
AP Detection
Scanning for Available EnGenius APs
Wireless Security
WPA/WPA2 Personal (WPA-PSK using TKIP or AES)
WPA/WPA2 Enterprise (WPA-EAP using TKIP)
802.1X RADIUS Authenticator: MD5/TLS/TTLS, PEAP
SSID Broadcast Enable/Disable
MAC Address Filtering, Up to 50 Entries
L2 Isolation (Access Point mode)

QoS (Quality of Service)
WMM (Wireless Multimedia)
Temperature Range
Operating: 32° to 104°F (0 to 40°C)
Storage temperature: -4°F to 140°F (-20°C to 60°C)
Humidity (non-condensing)
Operating: 90% or less
Operating: 90% or less
Physical Security
Kensington Security Slot (N/A for EWS500AP/EWS510AP)
Certifications
FCC, IC, CE
Device Dimensions and Weights
EWS300AP
Weight: 0.45 lbs. (204.1 g)
Length: 5.07" (128.7 mm)
Width: 5.07" (128.7 mm)
Height: 1.73" (43.9 mm)
EWS310AP
Weight: 0.80 lbs. (362.8 g)
Length: 6.36" (161.5 mm)
Width: 6.36" (161.5 mm)
Height: 1.64" (41.6 mm)
EWS320AP
Weight: 0.80 lbs. (362.8 g)
Length: 6.5" (165.1 mm)
Width: 6.5" (165.1 mm)
Height: 1.64" (41.6 mm)
EWS350AP / EWS360AP
Weight: 0.80 lbs. (362.8 g)
Length: 6.5" (165.1 mm)
Width: 6.5" (165.1 mm)
Height: 1.64" (41.6 mm)
EWS500AP / EWS510AP
Weight: 0.65 lbs. (296 g)
Length: 1.45" (37 mm)
Width: 4.33" (110 mm)
Height: 5.19" (130 mm)
Warranty
1-Year Standard

EnGenius Neutron Series Outdoor Managed Access Points

			
Models	EWS860AP	EWS660AP	EWS650AP
Standards	802.11a/b/g/n/ac	802.11a/b/g/n/ac	802.11a/b/g/n/ac
Frequency	2.4 & 5 GHz	2.4 & 5 GHz	2.4 & 5 GHz
2.4 GHz Max. Data Rate	450 Mbps	450 Mbps	300 Mbps
5 GHz Max. Data Rate	1,300 Mbps	1,300 Mbps	867 Mbps
Radio Chains/Streams	3 x 3:3	3 x 3:3	2 x 2:2
RF Output Power	15 dBm	15 dBm	15 dBm
Ingress Protection Rating	68	55	55
Primary Ethernet Port	1 x Gigabit Port	1 x Gigabit Port	1 x Gigabit Port
Secondary Ethernet Port	1 x Gigabit Port (PoE Output)	1 x Gigabit Port	1 x Gigabit Port
PoE Compliant	802.3at (PoE+)	802.3at (PoE+)	802.3at (PoE+)
Power Consumption (Peak)	35.7W	23W	23W
Integrated Antennas	N/A	6 x 5 dBi	2 x 5 dBi
External Antennas	2.4 GHz: 3 x 5 dBi 5 GHz: 3 x 7 dBi	N/A	N/A

Key Features

- > Tough IP68- and IP55-Rated Housings
- > 802.11ac Wireless Speeds
- > Dynamic Channel Optimization
- > Dual-Band
- > Band Steering
- > Seamless Roaming, Fast Handover
- > Supports Connectivity of 100+ Users
- > 16 SSIDs (8 SSIDS per frequency band)
- > Wireless Traffic Shaping
- > QoS
- > SSID-to-VLAN Mapping
- > Email Alert
- > Wi-Fi Scheduler
- > Auto-Reboot
- > AP Detection

Technical Specifications

Frequency
RF: 2.4 and 5 GHz Frequency Bands
Standards
IEEE 802.11a/b/g/n/ac
Radio I
11b/g/n: 2.412~2.484 GHz
Radio II
11a/n/ac: 5.18-5.24 and 5.26-5.32 and 5.5-5.7 and 5.745-5.825 GHz
Data Rates
EWS650AP Up to 300 Mbps in 2.4 GHz; up to 867 Mbps in 5 GHz
EWS660AP / EWS860AP Up to 450 Mbps in 2.4 GHz; up to 1300 Mbps in 5 GHz
Memory
256MB
Flash Memory
16MB

Power Consumption
EWS650AP Up to 23W
EWS660AP Up to 23W
EWS860AP Up to 34W
Antenna Array
EWS650AP / EWS660AP Internal High Gain Antenna Array supporting both 2.4 GHz and 5 GHz
EWS860AP External High Gain Antennas 3 x 5 dBi for 2.4 GHz External High Gain Antennas 3 x 7 dBi for 5 GHz
Physical Interface
2 x RJ45 Gigabit Ethernet (10/100/1000 Mbps) - PoE Capable 802.3at
1 x Reset Button
1 x Power Connector
LED Indicators
1 x Power
1 x 2.4 GHz
1 x 5 GHz
1 x WLAN (Wireless Connection)
1 x LAN

Power Requirements
Power Supply: 100 to 240V DC +/-10% 50/60 Hz
Active Ethernet (Power-over-Ethernet IEEE 802.3at)
PoE Injector DC IN, 48V/0.8A
Modulations
OFDM: BPSK, QPSK, 26-QAM, 64-QAM, DBPSK, DQPSK, CCK
Operating Channels
2.4 GHz US/Canada 1-11
5 GHz Country dependent for the following ranges: 36, 40, 44, 48, 52, 56, 60, 64, 100, 104, 108, 112, 116, 120, 124, 128, 132, 136, 140, 149, 153, 157, 161, 165
Operation Modes
Access Point
Multiple BSSID
Supports Up to 8 SSIDs Per Radio
SSID-to-VLAN Tagging
Supports 802.1q SSID-to-VLAN Tagging

Technical Specifications continued

Spanning Tree	
Supports 802.1d Spanning Tree Protocol	
Wireless	
Wireless Mode: 11a/11b/11g/11n/11ac	
Channel Selection (settings vary by country)	
Channel Bandwidth (Auto, 20 MHz, 40 MHz, 80 MHz)	
Transmission Rate	
2.4 GHz 11n only, 11b/b/n mix, 11b only, 11b/g, 11g only	
5 GHz 11ac only, 11n only, 11a/n mix, 11a only	
QoS	
WMM (Wireless Multimedia)	
Wireless Management Features (with ezMaster & Neutron Switch)	
Access Point Auto Discovery and Provisioning	
Access Point Auto IP Assignment	
Access Point Cluster Management	
Remote Access Point Rebooting	
Access Point Device Name Editing	
Access Point Radio Settings	
Band Steering	
Traffic Shaping	
Fast Handover	
Fast Roaming	
Access Point Client Limiting	
Client Fingerprinting	
Wireless Security (WEP, WPA/WPA2 Enterprise, WPA/WPA2 PSK)	
AP VLAN Management	
VLANs for Access Point- Multiple SSIDs	
Secured Guest Network	
Captive Portal	
Access Point Status Monitoring	
Rogue AP Detection	
Wireless Client Monitoring	
Background Scanning	
Email Alert	
Wireless Traffic & Usage Statistics	
Real-time Throughput Monitoring	
SmartSync Redundancy	
Visual Topology View	
Floor Plan View	
Map View	
Wireless Coverage Display	
Secure Control Messaging (SSL Certificate)	
Local MAC Address Database	
Remote MAC Address Database (RADIUS)	
Unified Configuration Import / Export	
Bulk Firmware Upgrade Capability	
One-Click Update	

Wireless Management Features (with ezMaster & Neutron Switch) continued	
Intelligent Diagnostics	
Kick/Ban Clients	
Tx Power Control	
Adjust Transmit Power by dBm	
Configuration	
Web-Based Configuration (http)	
Firmware Upgrade	
Via Web Browser	
Administrator Settings	
Administrator Username and Password Change	
MIB	
MIB I, MIB II (RFC1213) and private MIB	
System Monitoring	
Status Statistic and Event Log	
SNMP	
V1 / V2c / V3	
Traffic Shaping	
Incoming and Outgoing Wireless Traffic Shaping	
Reset Settings	
Reboot (press & hold for 2 seconds).	
Reset to Factory Default (press & hold for 10 seconds)	
Auto-Channel Selection	
Automatically Selecting Least Congested Channel	
Bandwidth Measurement	
IP Range and Bandwidth Management	
Schedule Reboot	
Reboot Access Point by Minute, Hour, Day, or Week	
Backup and Restore	
Save and Restore Settings via Web Interface	
CLI	
Supports Command Line Interface	
Diagnosis	
IP Pinging Statistics	
Log	
SysLog and Local Log Support	

LED Control	
On/Off	
AP Detection	
Scanning for Available EnGenius APs	
Wireless Security	
WPA/WPA2 Personal (WPA-PSK using TKIP or AES)	
WPA/WPA2 Enterprise (WPA-EAP using TKIP)	
802.1X RADIUS Authenticator: MD5/TLS/TTLS, PEAP	
SSID Broadcast Enable/Disable	
MAC Address Filtering, Up to 50 Entries	
Guest Network	
L2 Isolation (Access Point mode)	
QoS (Quality of Service)	
WMM (Wireless Multimedia)	
Temperature Range	
Operating:	
EWS860AP -4°F to 158°F (-20°C to 70°C)	
EWS650AP / EWS660AP -4°F to 140°F (-20°C to 60°C)	
Storage: -22°F to 176°F (-30°C to 80°C)	
Humidity (non-condensing)	
Operating: 90% or less	
Storage: 90% or less	
Weatherproof	
EWS650AP IP55-Rated Enclosure	
EWS660AP IP55-Rated Enclosure	
EWS860AP IP68-Rated Enclosure	
Certifications	
FCC, IC, CE	
Device Dimensions and Weights	
EWS650AP / EWS660AP	
Weight: 1.89 lbs. (857.2 g)	
Length: 11.97" (304 mm)	
Width: 7.13" (181.1 mm)	
Height: 1.81" (45.9 mm)	
EWS860AP	
Weight: 4.17 lbs. (1.8 kg)	
Length: 11.22" (284.9 mm)	
Width: 8.58" (217.9 mm)	
Height: 2.10" (53.3 mm)	
Warranty	
1-Year Standard	

HQ, Taiwan
www.engeniusnetworks.com

Costa Mesa, California, USA | (+1) 714 432 8668
www.engenius.tech

Dubai, UAE | (+971) 4 357 5599
www.engenius-me.com

Singapore | (+65) 6227 1088
www.engenius.tech.sg

Miami, USA | (+1) 305 887 7378
pg.engenius.tech eg.engenius.tech

Eindhoven, Netherlands | (+31) 40 8200 888
www.engeniusnetworks.eu

