



Outdoor 2 MP Full HD 1080p PoE+ IR Mini Speed Dome Network Camera

TV-IP430PI (v1.0R)

- Full 1080p HD 2MP resolution
- 4x optical zoom, 16x digital zoom, and autofocus
- Night vision up to 30 meters (100 ft.)
- Outdoor IP66 weather rating
- Endless 360° PTZ
- Digital WDR optimizes high contrast lighting environments
- Free pro-grade management software and mobile app
- Separate mounting bracket required—TV-HC400, TV-HW400, TV-HP400, or TV-HN400

TRENDnet's Outdoor 2 MP Full HD 1080p PoE IR Mini Speed Dome Network Camera, model TV-IP430PI, offers 4x optical zoom, 30 meter (100 feet) night vision, an IP66 weather rating, and endless 360 degree PTZ functionality. Record 2 Megapixel HD video (1920 x 1080) at 30 fps in a space saving H.264 compression format. Manage up to 32 TRENDnet cameras with included complimentary software and mobile apps. A separate mounting bracket is required—install with TRENDnet's TV-HC400, TV-HW400, TV-HP400, or TV-HN400.



Endless PTZ

Endless 360° pan/tilt/zoom, user defined 64x zoom, and autofocus capabilities maximize surveillance coverage.



Day/Night HD Surveillance

Full 1080p HD (2 MP) video at 30 fps in H.264 compression and 30 meter rated night vision provide 24-hour surveillance.



Outdoor Ready

Built for extreme environments with an IP66 weather rating and an operating temperature range of -30 – 65 °C (-22 – 149 °F).

Required Mounting Brackets (sold separately)



Ceiling Mount
TV-HC400



Wall Mount
TV-HW400

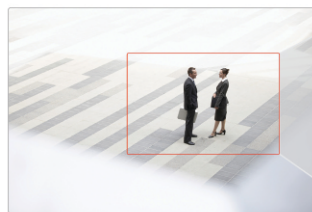


Pole Mount
TV-HP400



Corner Mount
TV-HN400

Networking Solution



4x Optical Zoom
16x Digital Zoom



Autofocus to Final
Viewing Field



30 M Night Vision

1 PoE+ Port

2 Alarm Input/output

3 Audio wires

4 Camera installation leash

5 IP66 weather rated

6 Mounting bracket collar
(Required mounting bracket,
sold separately)

7 Endless PTZ

8 Autofocus lens

9 Infrared LEDs



2 Megapixel Full 1080p HD

Record 1920 x 1080 at 30 fps in the space saving H.264 compression format



Powerful Zoom

4x optical zoom and 16x digital zoom combine for a total 64x zoom factor with autofocus



Smart IR

Night vision up to 30 meters (100 ft.) automatically adjusts to the zoom factor



Endless PTZ

Endless 360° variable speed pan tilt zoom and user defined 3D zoom within the web interface



Outdoor Rated

Built for extreme environments with an IP66 weather rating and an operating temperature range of -30 – 65 °C (-22 – 149 °F)



PoE+

Includes a PoE+ injector (30 Watts) and is compatible with 802.3at PoE+ switches



Additional Mounting Bracket Required

Separate mounting bracket required—install with TRENDnet's TV-HC400, TV-HW400, TV-HP400, or TV-HN400



Auto Patrol

Choose pre-defined or program auto patrol sequences with varying zoom levels



Storage

Record video to a Samba client or to a Micro SD card (up to 32 GB sold separately)



Tamper Detection

Receive tamper detection video clips via email, ftp, or save to Samba client or Micro SD card



D-WDR

Improved image quality and autofocus in high contrast lighting environments with Digital Wide Dynamic Range technology



Recording Schedule

Define a weekly recording schedule



IPv6

IPv6 support



ONVIF

ONVIF compliant



Complimentary Software

Complimentary pro-grade software to manage up to 32 TRENDnet cameras



Complimentary Apps

Live video to a mobile device with free iOS® and Android™ apps

Specifications

Lens

- Focal length: 2.8 - 12 mm
- Focal depth: 10 - 1,500 mm (Wide-Tele)
- Aperture: F1.6 - 2.7 (Wide - Tele)
- Sensor: 1/2.8" Progressive Scan CMOS
- Focus: auto, semi-auto, and manual
- Iris control: auto and manual

Viewing Angle

- Horizontal: 115 - 33.8° (Wide - Tele)

Zoom

- Combined zoom factor: 64x
- Optical: 4x
- Digital: 16x
- Speed: 1s

Pan/Tilt

- Pan: endless 360°
- Tilt: -10 - 90° (auto flip)
- Pan speed: (manual) 0.1 - 160°/s, (preset) 160°/s
- Tilt speed: (manual) 0.1 - 120°/s, (preset) 120°/s
- Number of presets: 256
- Patrol: 8 patrols, up to 32 presets per patrol
- Scheduled PTZ: create detailed weekly schedule with the following activity options: auto scan, frame scan, random scan, patrol, pattern, preset, panorama scan, tilt scan, dome reboot, and dome adjust

Minimum Illumination

- IR off: color: 0.05 lux, B/W: 0.01 lux
- IR on: 0 lux
- 30 m IR illumination distance
- Smart IR: automatically adjusts wide angle and narrow focus IR to match zoom ratio

Video

- Digital Wide Dynamic Range (D-WDR)
- Backlight Compensation (BLC)
- 3D Digital Noise Reduction (DNR)
- Shutter speed: 1 - 1/10,000s
- H.264 resolution: 1920 x 1080 up to 30 fps
- MJPEG resolution: 704 x 480 up to 30 fps

Audio

- 2-way audio supported (mic and speaker not included)
- External microphone line in / speaker line out

I/O

- External input/output for alarm installation

Micro SD

- Up to 64 GB micro SD card support

Hardware Standards

- IEEE 802.1X
- IEEE 802.3
- IEEE 802.3u
- IEEE 802.3at

Device Interface

- 10/100 Mbps PoE+ port

- Power connector (for non-PoE installation)
- Audio wires (in/out/ground)
- Micro SD card slot (64 GB max.)
- Alarm I/O wires
- Suspension cable secures camera during installation

Input / Output

- Alarm input: 1 (0 - 5v DC)
- Alarm output: 1 relay output
- Audio input: 1 audio line in, 2 - 2.4 V; impedance: 1000 Ω, ± 10%
- Audio output: 1 output line out, impedance: 600 Ω

Housing

- Weather rating: IP66
- TVS 4,000 V lightning, surge, and voltage transient protection
- Built-in automatic heater for cold weather conditions

Network Protocol

- IPv4, IPv6, UDP, TCP, IGMP, ICMP, ONVIF v2.2
- DHCP, NTP, DNS, DDNS, SMTP, FTP, SNMP (v1, v2c, v3)
- CIFS/SMB, NFS
- HTTP, HTTPS
- PPPoE
- UPnP, RTSP, RTP

Operating Temperature

- -30 - 65 °C (-22 - 149 °F)

Operating Humidity

- Max. 90% non-condensing

Certifications

- CE
- FCC

Dimensions

- 155 x 155 x 235 mm (6.1 x 6.1 x 9. in.)

Weight

- 2 kg (4.4 lbs.)

Power (Power brick not included)

- Input: PoE+ (IEEE 802.3at)
- Consumption: 20 / 14 Watts max. (IR and heater on/off)

Required Mounting Accessories (not included)

- Ceiling mount: TV-HC400
- Pole mount: TV-HP400
- Wall mount: TV-HW400
- Corner mount: TV-HN400

Management Interface

- Multi-language support: English, French, German, Russian, and Spanish
- IP address filter
- QoS traffic prioritization
- Time, date, and text overlay
- Image settings: brightness, contrast, saturation, limit gain, sharpness, focus mode, minimum focus,

exposure mode, smart IR, video standard, day/night switch, sensitivity, mirror, slow shutter, D-WDR, lens initialization, BLC, white balance, digital noise reduction, noise reduction level, Defog mode, zoom limit, HLC

- D-WDR enhances video quality in high contrast daytime lighting
- 3D DNR Digital Noise Reduction enhances night vision quality
- Scheduled recording: continuous and motion detection
- Video storage: to computer, NAS, CIFS/SMB share, NFS, Micro SD card, FTP server, or through software
- Motion detection fields: define custom motion detection areas, motion sensitivity, and dynamic motion analysis
- Smart privacy masks: custom privacy masks are fixed to an area of interest as the camera pans and tilts
- Tamper detection: email notification if the viewing field is suddenly obscured
- Browser video playback: advanced playback functionality with visual timeline displaying detected motion and scheduled recordings
- Alert messages: storage full, storage error, and illegal login
- Snapshot: real time snapshot, motion detection with schedule, tamper detection with schedule
- Supported dynamic DNS services: dyn.com and No-IP.org
- Management Setting: maximum 32 user accounts
- Supports remote management
- Storage logs: Alarm, Exception, Operation, and others
- Compatibility: Internet Explorer® 9.0 or higher, Firefox® 13.0 or higher, Safari® 5.0 or higher, Chrome™ 24.0 or higher

TRENDnetVIEW Pro Software

- Supports up to 32 TRENDnet cameras
- Multiple language support
- Set recording options (motion detection, schedule, event trigger)
- Search and playback
- Custom viewing modes and options
- Compatibility: Windows® 10, 8.1, 8, 7, Vista, XP, Windows Server® 2003, 2008

TRENDnetVIEW App

- Free iOS and Android™ app
- View your camera on your mobile device
- Take snapshots
- Pan/Tilt/Zoom

Warranty

- 3 year limited

Package Contents

- TV-IP430PI
- CD-ROM (Software & User's Guide)
- Quick Installation Guide

* PoE+ (802.3at) switch or injector required.

