

**14.01.3418**

**ROLINE Wireless Extender Set,  
TX+RX, C-HDMI, 1080p, 20 m**

**Manual**

Rev 1.0

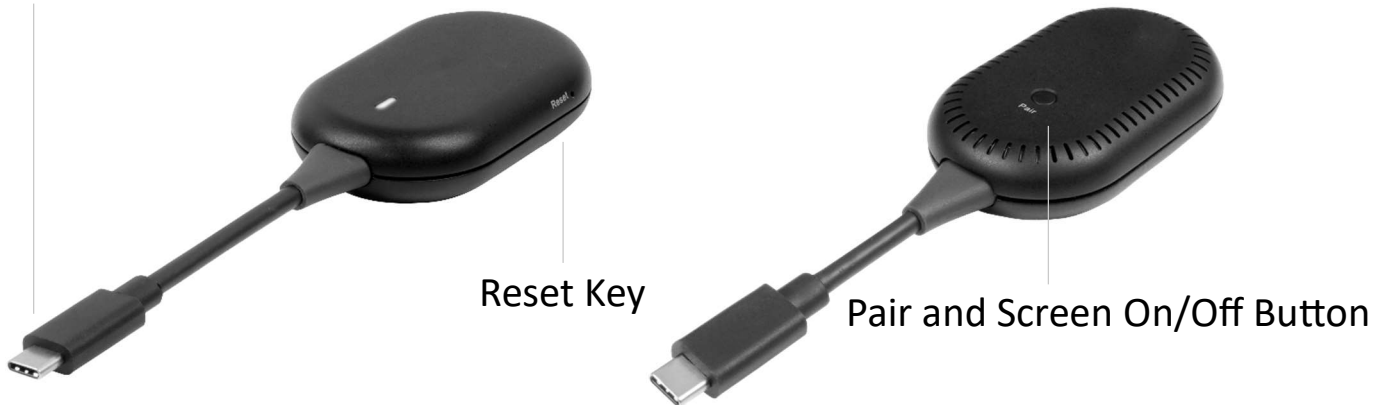


---

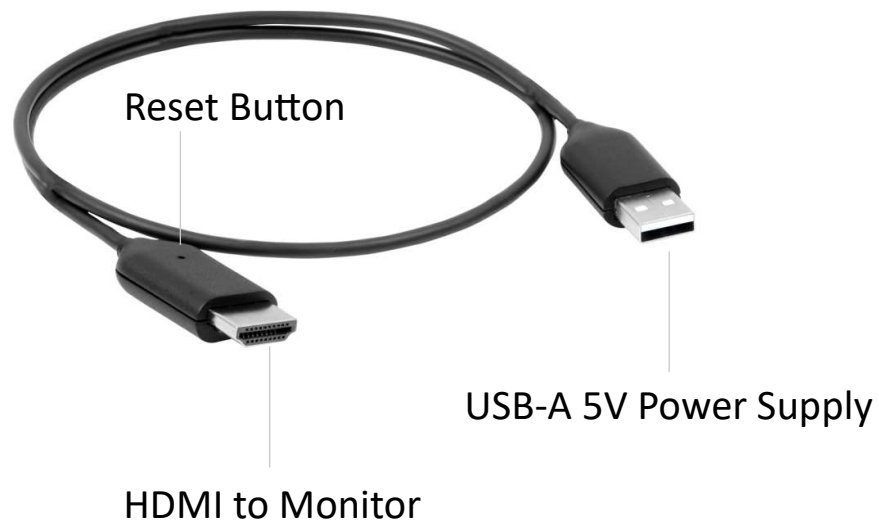
## Introduction

The Transmitter (TX), with USB-C support and DP Alt mode, ensures seamless cross-platform connectivity with Windows, macOS, and ChromeOS on PCs or tablets.

USB-C with DP Alt Mode



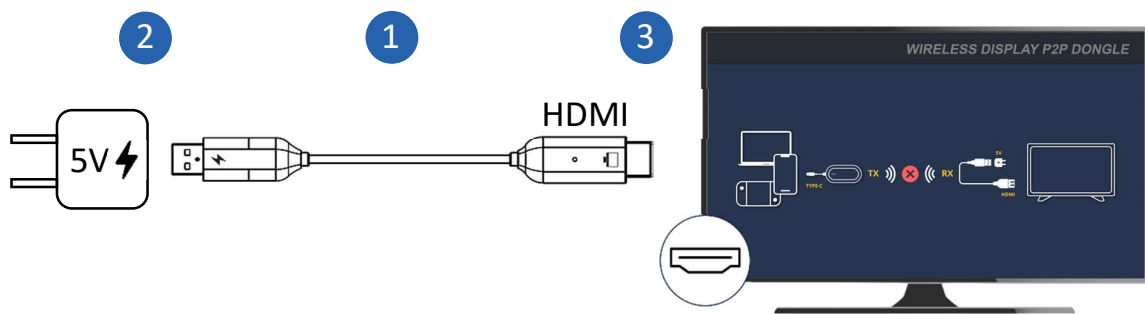
The Receiver(RX) includes an HDMI connection for TV and monitors compatibility.



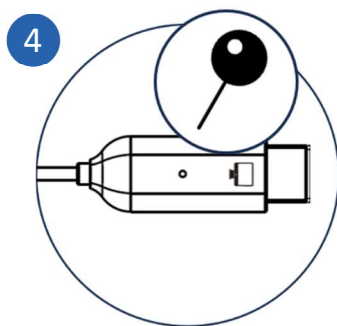
# PAIRING PROCESS

## 1> Initiate the RX Dongle

- 1) Confirm the "RX Device".
- 2) Connect the USB-A side to the power source.
- 3) After booting, enter the main interface.



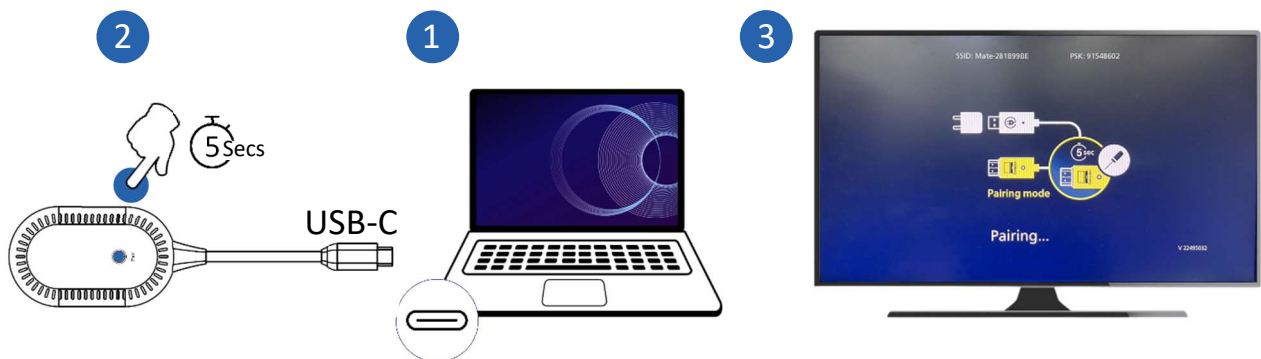
- 4) Press and hold the button on RX to display the pairing prompt.
- 5) Confirm that the version number, SSID display and version number of the interface are normal and OK.



## 2> Press the Pair and Screen On/Off button on the TX

### Dongle to Pair

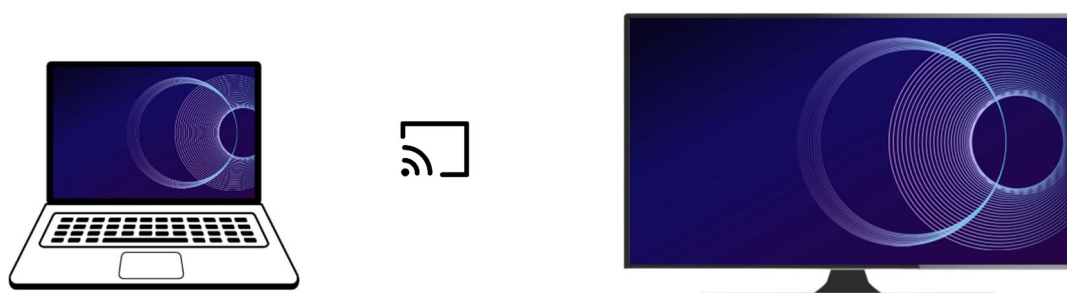
- 1) Confirm the "TX Device" and connect to the device.
- 2) Press and hold the Pair and Screen On/Off button on the TX for about 5 seconds until the light stops. About 1 second after the light stops, the light will flash faster.
- 3) At this time, release the button to start pairing (TX/RX).



- 4) Confirm that "Pairing OK" is displayed, the screen is normal and OK.



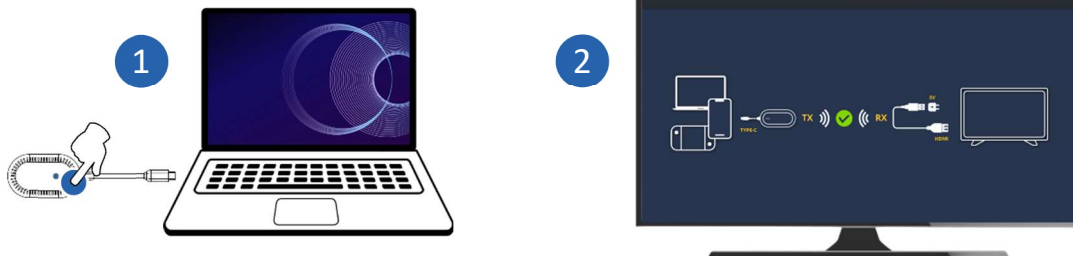
- 5) The pairing process is completed, mirroring the content of the device's screen to the monitor.



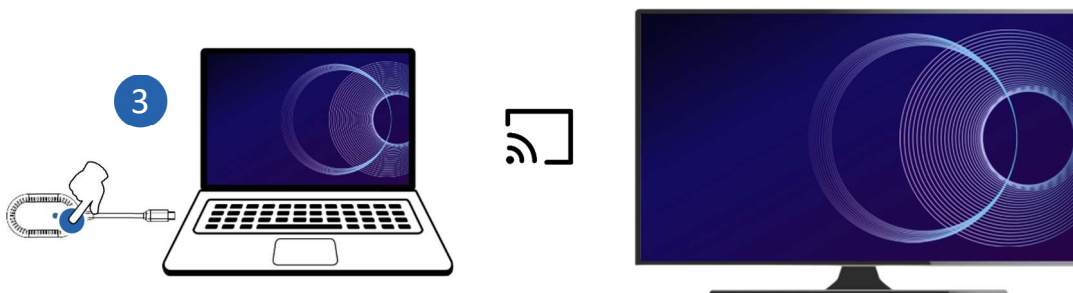
---

### 3> Turn off/Restore Mirroring in the Pairing Mode

- 1) Press the Pair and Screen On/Off button on the connected device.
- 2) The mirroring is off, and the monitor displays the pairing prompt.



- 3) Press the Pair and Screen On/Off button again to restore the mirroring.



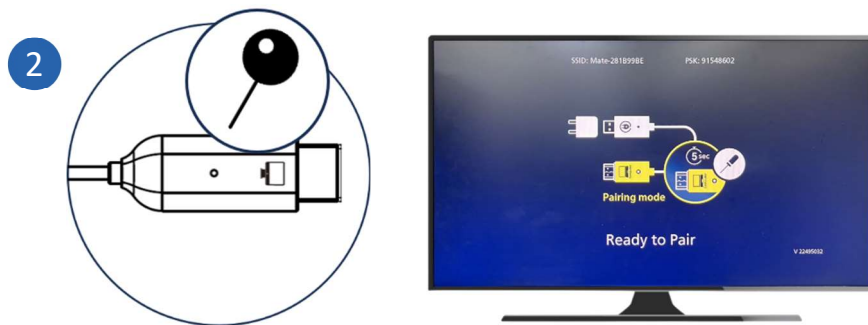
# OPERATING WITH DUAL TX DONGLES

## 1> Pair the Second TX Dongle

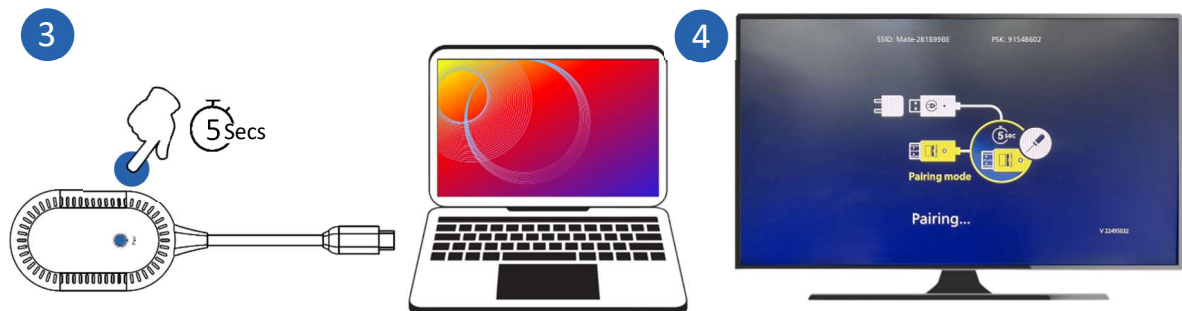
- 1) Connect the second TX dongle to a new device.



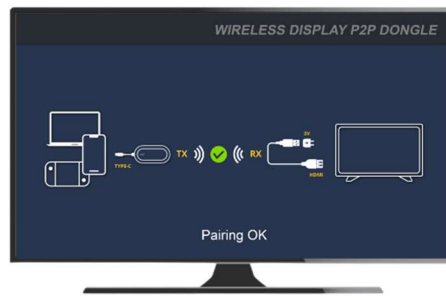
- 2) Press and hold the button on RX to display the pairing prompt. Confirm that "Ready to Pair" is displayed.



- 3) Press and hold the Pair and Screen On/Off button on the second TX for about 5 seconds.
- 4) Release the button to start pairing.



- 
- 5) Confirm that “Pairing OK” is displayed and that the screen is normal.



- 6) The pairing process is complete, mirroring the content of the second device's screen to the monitor.



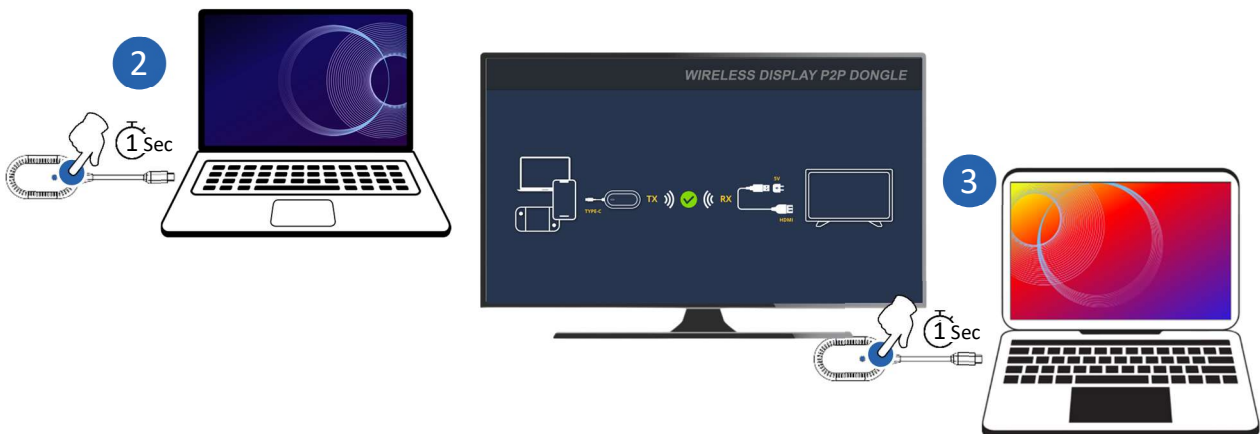
---

## 2> Switch Mirroring Between Two Paired Devices

- 1) Confirm that both devices are connected to their respective TX dongles and have completed pairing with the RX on the monitor.



- 2) Press the Pair and Screen On/Off button on the connected device to display the pairing prompt.
- 3) Press the Pair and Screen On/Off button on the device you want to connect.



- 4) Connectivity is complete, mirroring the content of the new device's screen to the monitor.

