

2-in-1U Mounting Kit

2K-0001 / 2K-0002 / 2K-0007

- The ATEN 2-in-1U Mounting Kit allows you to combine the CL3800/CL3700/CL3100 LCD KVM Console with a rack KVM switch in 1U of space, which helps users save space for a more convenient and flexible working environment.

To meet users' needs, ATEN offers two options of 2-in-1U Mounting Kit: the 2K-0001 (rack KVM switch option) / 2K-0007 (KVM over IP switch option), a Standard Installation that calls for at least two people to rack mount, and the 2K-0002, an Easy Installation accessory enabling one person to rack mount, which streamlines the rack mounting process.

Combining LCD KVM Console, rack KVM switch with the 2-in-1U Mounting Kit, users can enjoy ideal workstations with work space efficiency, limited space is no more a problem!

Standard Installation
2K-0001 / 2K-0007



Easy Installation
2K-0002

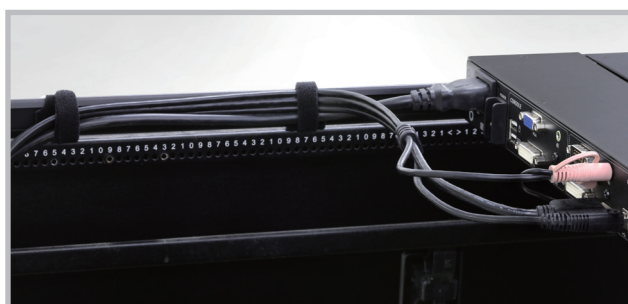


The 2-in-1U Mounting Kit allows you to install an LCD KVM and a KVM switch on the same unit of space as shown below.



There are two important points of the installation, please refer to the quick start guide for further details.

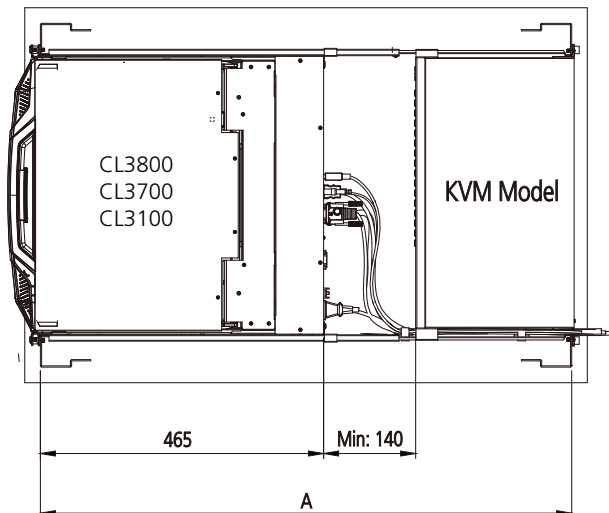
1. Collect the cables of the LCD KVM to the right-hand side (looking to the front of the LCD KVM) of the rail and wrap the narrower side of the cable straps around the cables.



2. The cables should be managed between the KVM switch and the rail.



Compatible KVM Switches



Note: A stands for Applicable Rack Depth.

Table of compatibility between the LCD KVM consoles and the KVM switches

Mounting Kit	LCD KVM Console	CL3800	CL3700	CL3100	Depth of KVM Switch (mm)	Applicable Rack Depth (mm)
	Compatible KVM Model					
2K-0001/2K-0002	CS1768	●	N/A	N/A	155	780-1050
	CS1754/CS1758, CS1308/CS1316, CS1708A/CS1716A, KH1508A/KH1516A/KH1532A, KH1508Ai/KH1516Ai	●	N/A	●		
	CS19208/CS19216	●	●	N/A	210	
	CS1798/CS17916	●	●	N/A	254	
2K-0007	KN1108VA/KN1116VA	●	●	●	280	885-1050
	KN4116VA/KN4132VA, KN2116VA/KN2132VA, KN1132V, KN4140VA/KN4124VA, KN2140VA/KN2124VA	●	●	●	407	

Product information is subject to change without prior notice.

ATEN International Co., Ltd.

3F., No.125, Sec. 2, Datong Rd., Sijhih District., New Taipei City 221, Taiwan
 Phone: 886-2-8692-6789 Fax: 886-2-8692-6767
 www.aten.com E-mail: marketing@aten.com

Publish Date: 09/2020 V6.0



© Copyright 2020 ATEN® International Co., Ltd.
 ATEN and the ATEN logo are trademarks of ATEN International Co., Ltd.
 All rights reserved. All other trademarks are the property of their respective owners.