

Antec

CONSTELLATION SERIES

C5

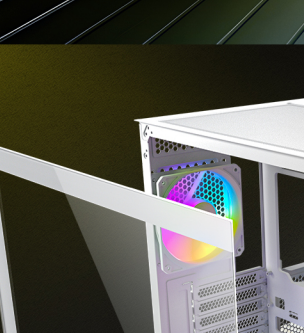
WHITE

ARGB

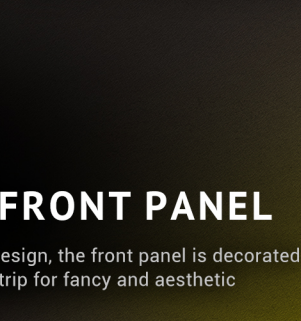
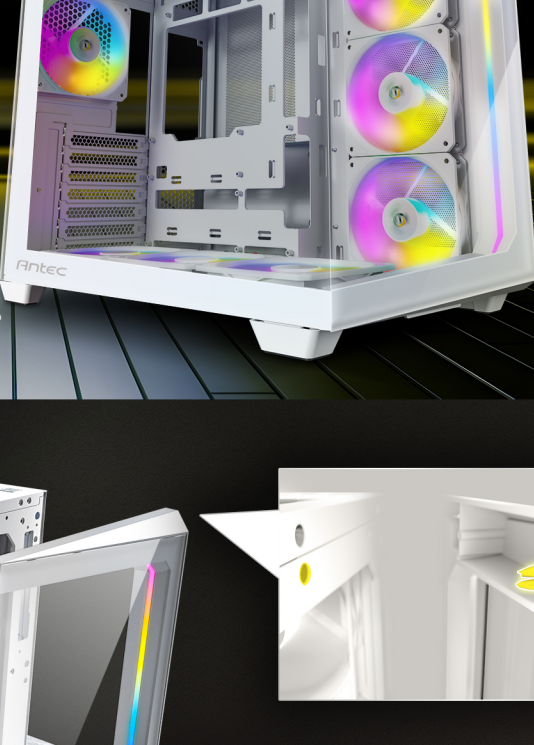


270° FULL-VIEW TEMPERED GLASS

Tempered glasses adopt the seamless paneling design with unique 45° beveling technique that makes the minimal joint gap, delivering an uninterrupted panoramic view.



45° glass beveling technique

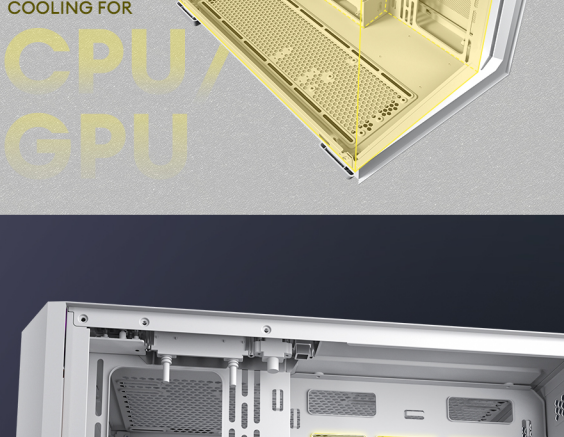


STYLISH FRONT PANEL

Featuring tool-free design, the front panel is decorated with ARGB lighting strip for fancy and aesthetic

DUAL CHAMBER

Dual chamber design for independent cooling, with the right chamber featuring top-mounted power supply and 95mm cable management space.

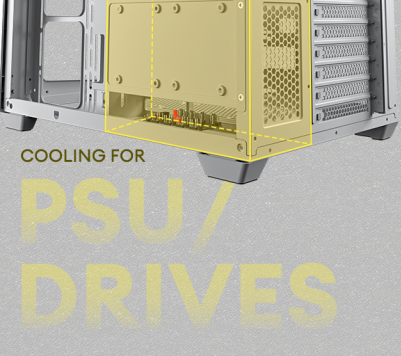


COOLING FOR

CPU/GPU

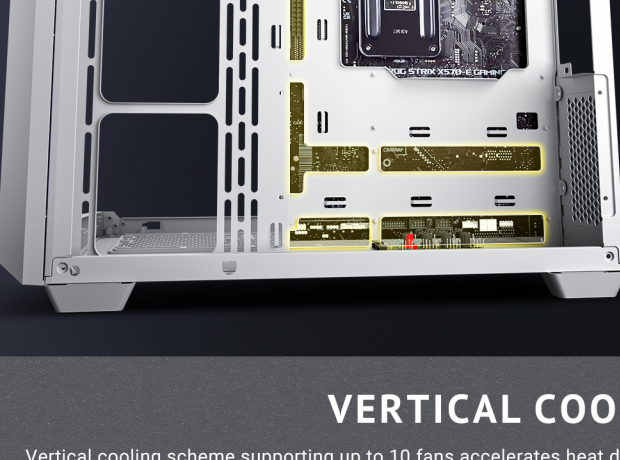
Cable Management Space

95mm



COOLING FOR

PSU/DRIVES



SUPPORT BACK-CONNECT MOTHERBOARDS

C5 ARGB supports next-gen back-connect motherboards. Plug in the cables from the back to give the front a cleaner look and a smoother airflow channel.

*Supported models:
ASUS TUF B760M-BTF WIFI D4,
ASUS TX GAMING B760-BTF WIFI,
ASUS DIY-APE B760 REVOLUTION,
MSI B760M PROJECT ZERO,
MSI B760M PROJECT ZERO,
Colorful CN B760M FROZEN WIFI V20,
and more to come.

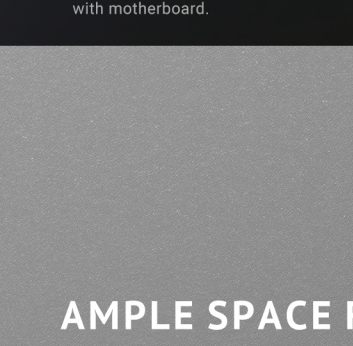
VERTICAL COOLING

Vertical cooling scheme supporting up to 10 fans accelerates heat dissipation by bottom-to-top vertical airflow.



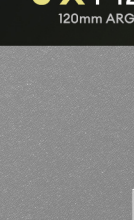
PRE-INSTALLED 7x ARGB PWM FANS WITH BUILT-IN FAN CONTROLLER

6 reverse fans on the side and bottom provide massive air intake.



▲ ARGB & PWM fan controller

Lighting effects could be switched by LED control button or synchronized with motherboard.



1X P12
120mm ARGB PWM
regular fan



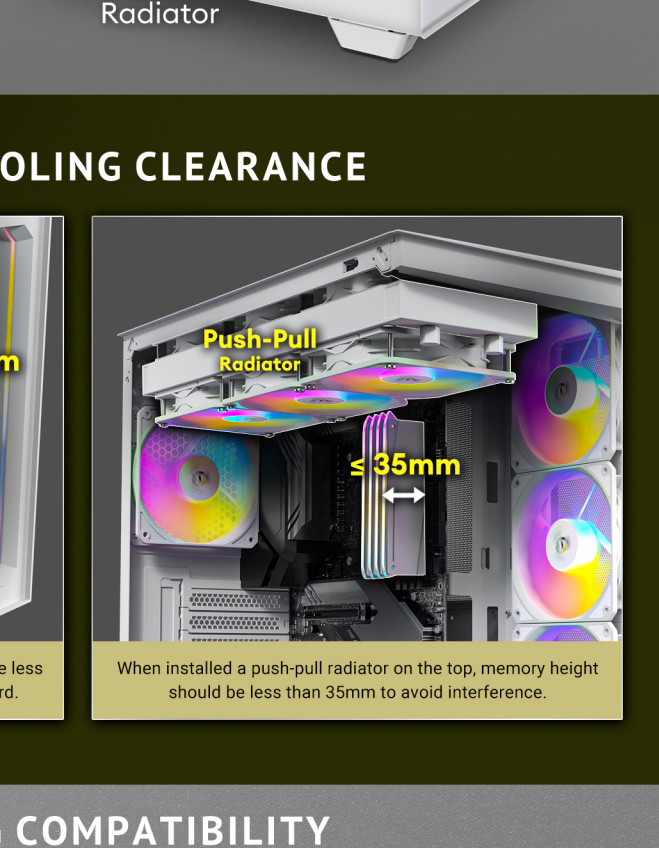
3X P12 Reverse
120mm ARGB PWM fans



3X P12 Reverse
120mm ARGB PWM fans

AMPLE SPACE FOR WATER COOLING

Simultaneous support for top and bottom 360mm radiators and side 280mm radiator.

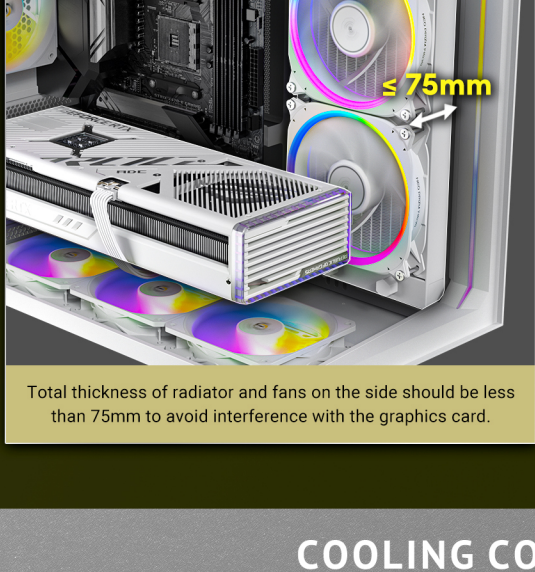


360mm
Radiator

280mm
Radiator

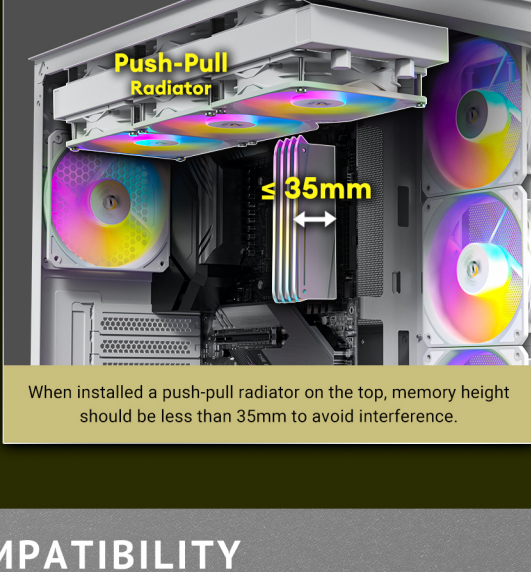
360mm
Radiator

WATER COOLING CLEARANCE



≤ 75mm

Total thickness of radiator and fans on the side should be less than 75mm to avoid interference with the graphics card.



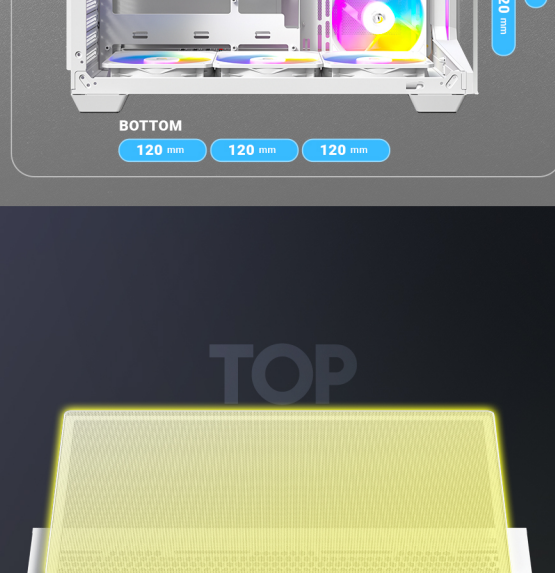
Push-Pull
Radiator

≤ 35mm

When installed a push-pull radiator on the top, memory height should be less than 35mm to avoid interference.

COOLING COMPATIBILITY

Simultaneously support 10 x 120mm fans.



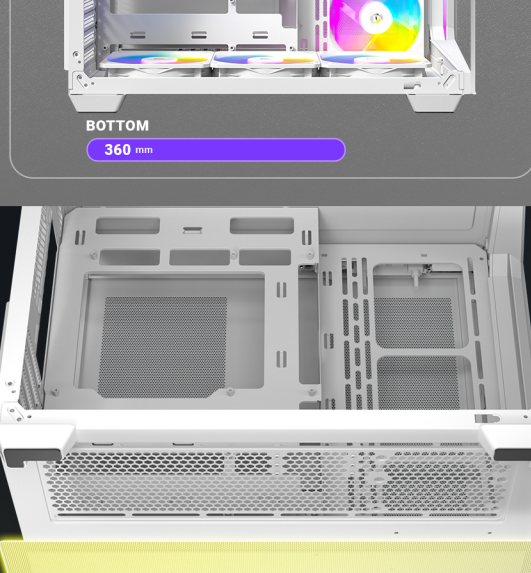
Fan Support

TOP
140mm 140mm
120mm 120mm 120mm

REAR
120mm

SIDE
140mm
120mm 120mm 120mm

BOTTOM
120mm 120mm 120mm



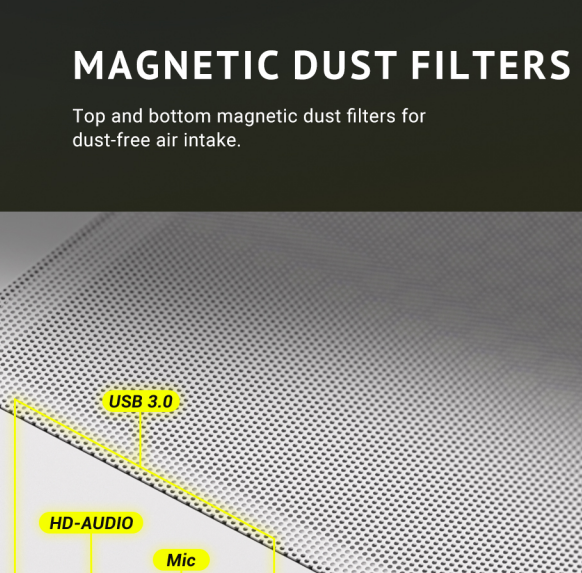
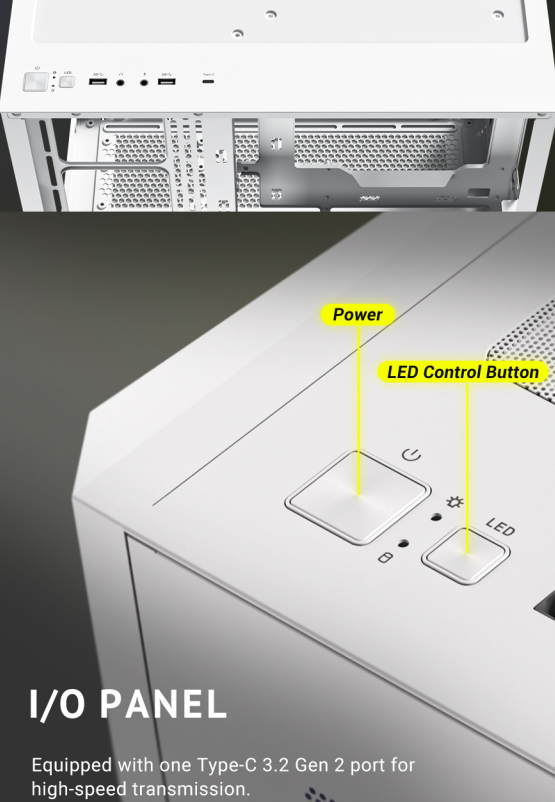
Radiator Support

TOP
360mm

REAR
120mm

SIDE
280mm

BOTTOM
360mm



MAGNETIC DUST FILTERS

Top and bottom magnetic dust filters for dust-free air intake.

I/O PANEL

Equipped with one Type-C 3.2 Gen 2 port for high-speed transmission.



Power

LED Control Button

USB 3.0

HD-AUDIO

Mic

Type-C 3.2 Gen 2

Type-C

STORAGE COMPATIBILITY

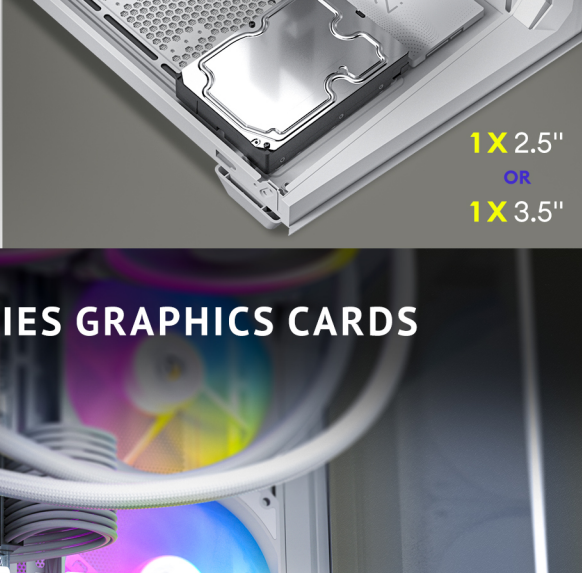
Removable hard drive cage provides space for 1 x 3.5" HDD and 2 x 2.5" SSD. The case bottom can additionally accommodate a 3.5" HDD after removing the frontmost bottom fan, or a 2.5" SSD after removing the lowest side fan.



1X 3.5"

2X 2.5"

Removable
hard drive cage



1X 2.5"

OR

1X 3.5"

SUPPORT RTX 40 SERIES GRAPHICS CARDS



410mm (max.)

EXTENSIVE INTERIOR

• Motherboard support ATX, Micro-ATX, ITX

Form Factor Mid Tower

Case Material Steel + Plastic + Glass

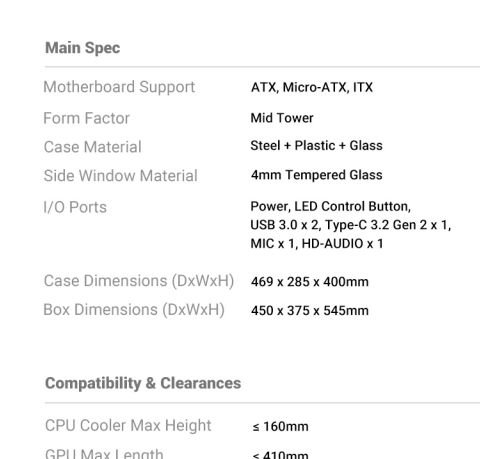
Side Window Material 4mm Tempered Glass

I/O Ports Power, LED Control Button, USB 3.0 x 2, Type-C 3.2 Gen 2 x 1, MIC x 1, HD-AUDIO x 1

Case Dimensions (DxWxH) 469 x 285 x 400mm

Box Dimensions (DxWxH) 450 x 375 x 545mm

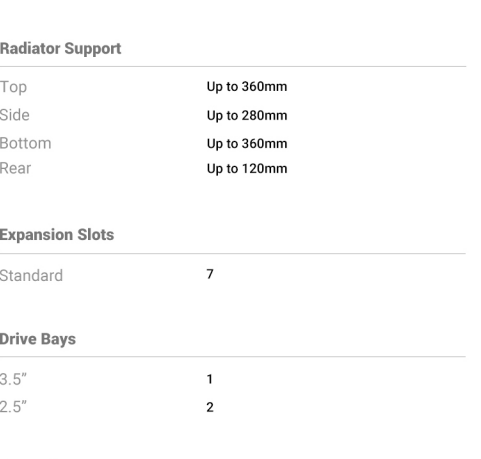
• Power Supply max length (include cable) ≤ 240mm



CPU

Motherboard

GPU



Power Supply

SPECIFICATION

Main Spec

Motherboard Support ATX, Micro-ATX, ITX

Form Factor Mid Tower

Case Material Steel + Plastic + Glass

Side Window Material 4mm Tempered Glass

I/O Ports Power, LED Control Button, USB 3.0 x 2, Type-C 3.2 Gen 2 x 1, MIC x 1, HD-AUDIO x 1

Case Dimensions (DxWxH) 469 x 285 x 400mm

Box Dimensions (DxWxH) 450 x 375 x 545mm

Compatibility & Clearances

CPU Cooler Max Height ≤ 160mm

GPU Max Length ≤ 410mm

Power Supply Max Length (include cable) ≤ 240mm

Cable Routing Space ≤ 90mm

Fan Support

Top 120mm x 3 / 140mm x 2

Side 120mm x 3

Bottom 120mm x 3

Rear 120mm x 1

Included Fans 120-25mm P12 R PWM ARGB reverse fans x 3 (side)

120-25mm P12 R PWM ARGB reverse fans x 3 (bottom)

120-25mm P12 R PWM ARGB fan x 1 (rear)

* Pre-installed P12 series fan specs vary from the retail version

Radiator Support

Top Up to 360mm

Side Up to 280mm

Bottom Up to 360mm

Rear Up to 120mm

Expansion Slots

Standard 7

Drive Bays

3.5" 1

2.5" 2

General

Dust Filter Top / Bottom

Net Weight 7.6kg

Gross Weight 9.2kg

Warranty 2 years

UPC# 0-761345-10034-2

