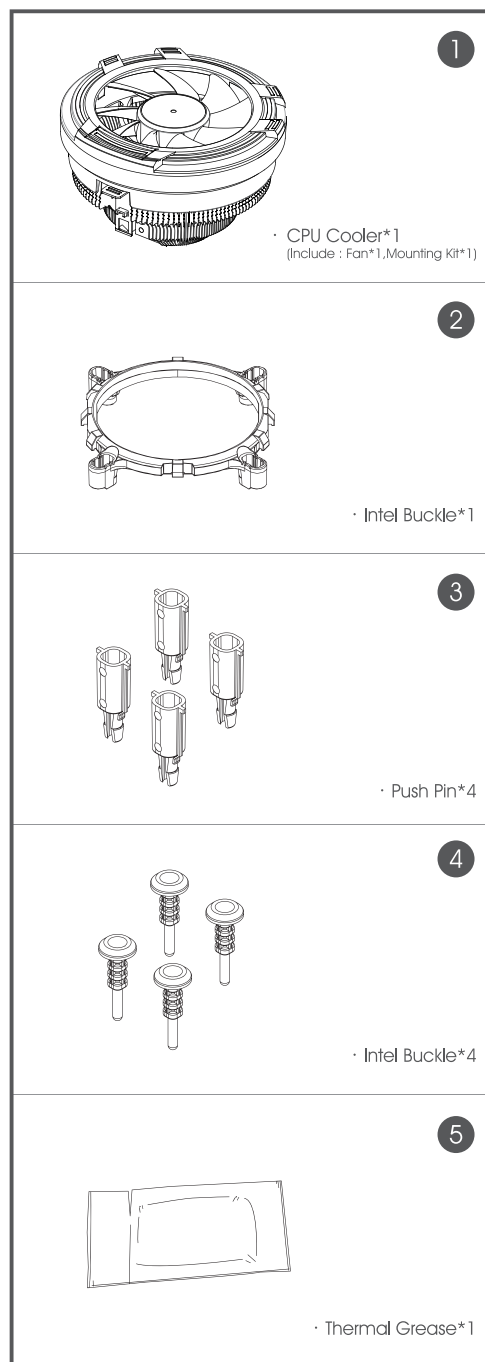




# T120

## INSTALLATION GUIDE

### PART LIST



#### BIOS Configuration

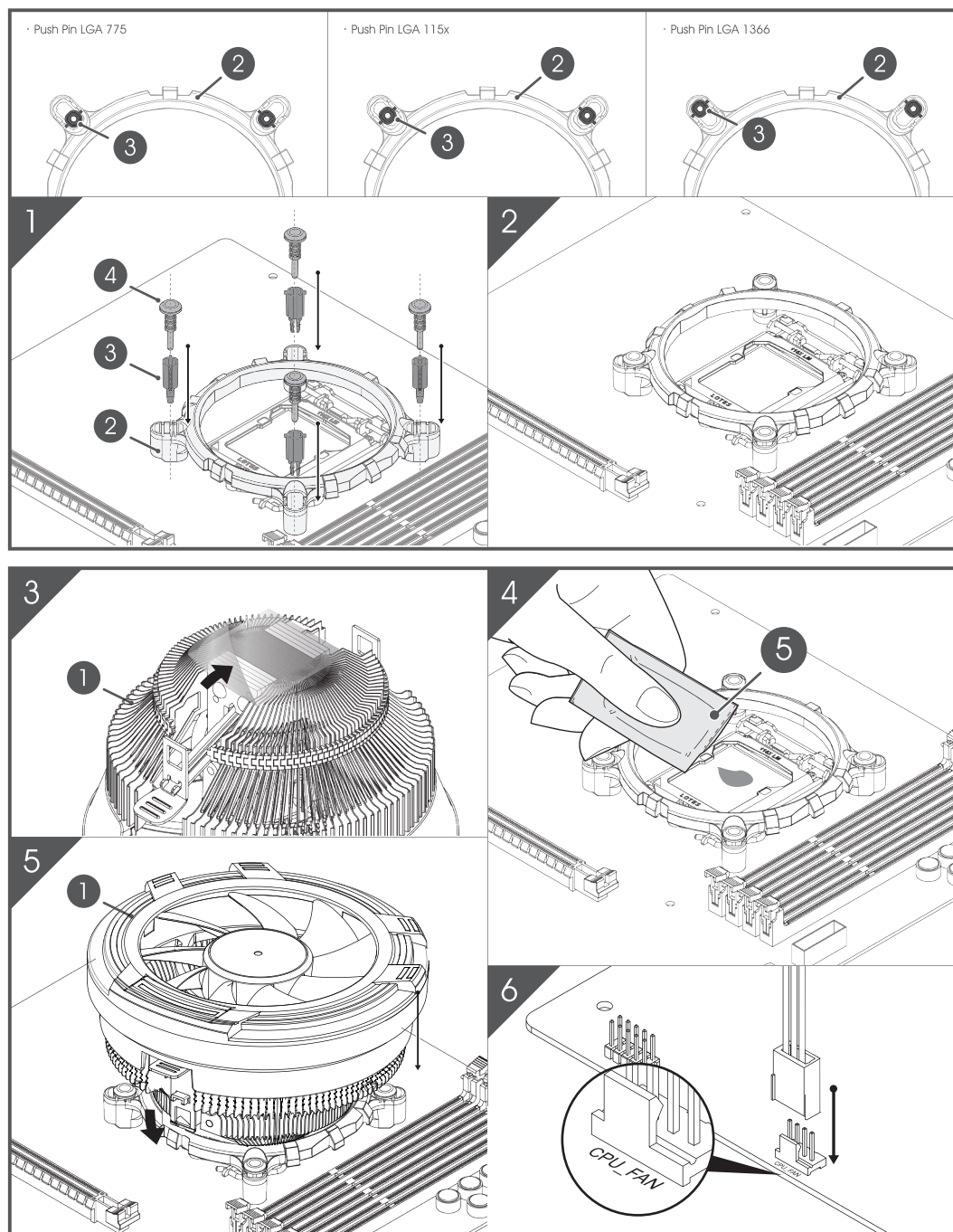
· In case that the "CPU FAN ERROR" message is displayed by the UEFI (BIOS), please adjust the UEFI fan speed settings ("CPU Fan Speed Low Limit" – Option).

※Settings will vary according to your type of motherboard.  
Please consult your motherboard instructions.

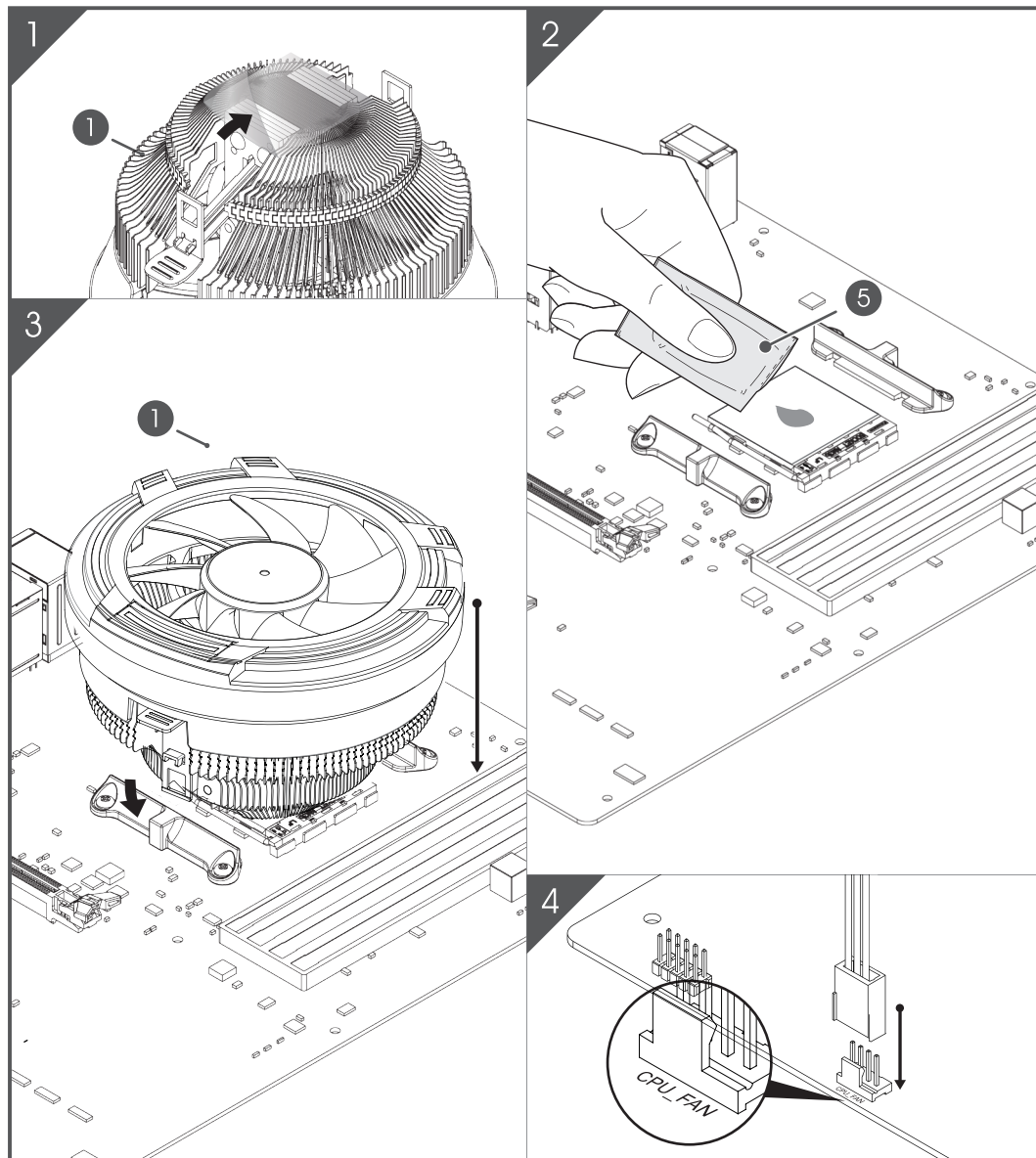
#### Before Installation & Caution during Installation

- It is recommended to reserve enough space for installing this product as well as to wear gloves to prevent any injuries during the installation.
- Please keep this product and accessories away from children.
- To prevent injuries, please be careful as the edges of the devices installed in your system can be sharp.

### INTEL LGA 775/115x/1366



### AMD AM3/AM4



www. **Antec** .com

© 2021 Antec, Inc. All rights reserved. Specifications are subject to change without prior notice. Actual products and accessories may differ from illustrations. Omissions and printing errors excepted. Content of delivery might differ in different countries or areas. Some trademarks may be claimed as the property of others.  
Made in China / 中國製造 / 中國製造

V2.2