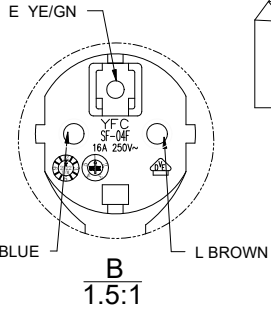
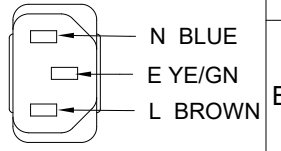
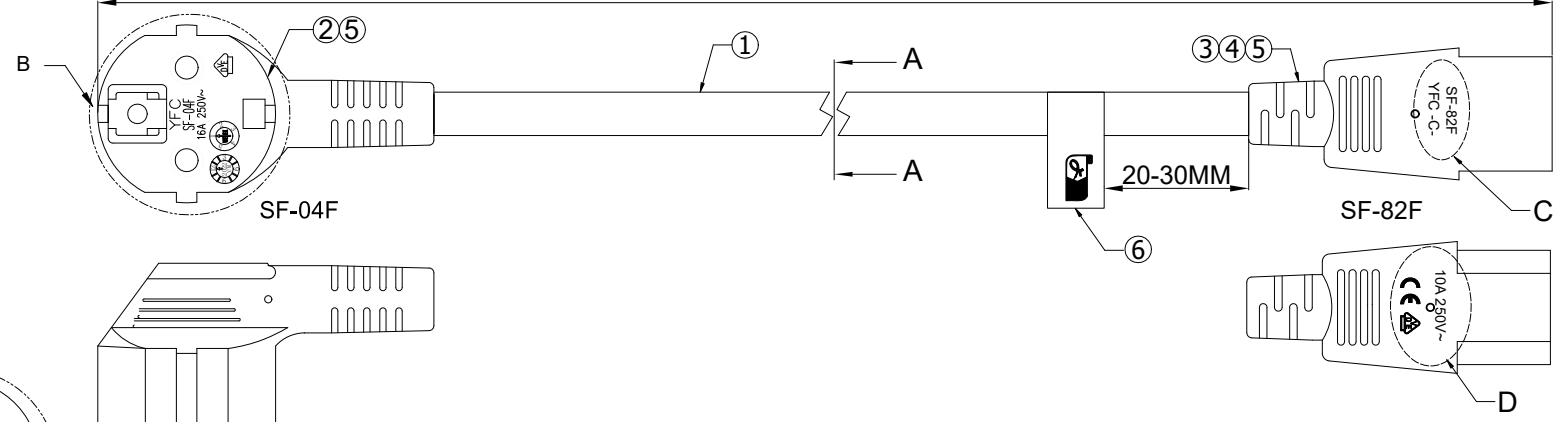


MOLDING:
SF-04F
SF-82F

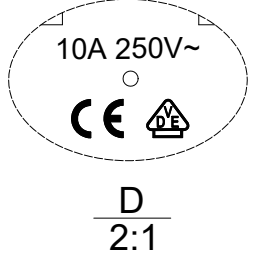
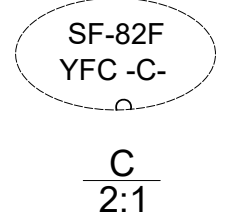
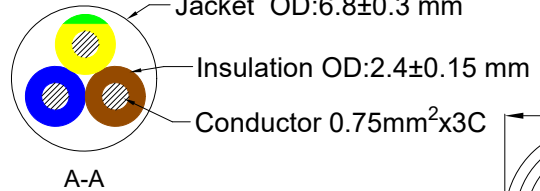


DATE	REV.	REVISION	DRAFTING	CHECKED
2022.11.30	A/1	Adding CE Logo	LQF	SZW
2022.12.26	A/2	Adding Customer Item NO.	LQF	SZW
2023.04.22	A/3	Conductor specification change	LQF	SZW
2023.09.05	A/4	Increase the material of wire and plug	LQF	2023.09.05 宋正伟

Length

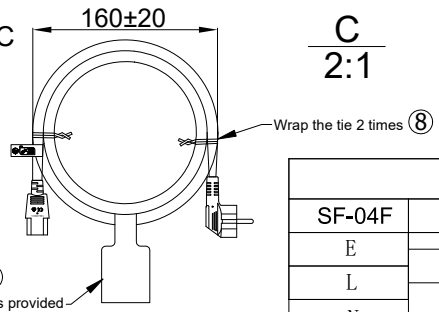


CABLE MARKING (NO.771) : <VDE> H05Z1Z1-F 3G 0.75MM² YFC BON-EAGLE



Comply with LSOH standard DIN EN50525-3-11	
Polarity and Conduction and Penetration Test	
Dielectric Voltage Withstand Test : 2000V / 1 Sec	
Electrical Performance (20°C)	
Item	Parameter
Conductor Resistance	≤26.0Ω/1000m
Voltage Rating	AC 300/500V

Customer Item NO.	Cable Color	Molding Color	Length (MM)
19.44.1000	Black	Black	800±15
19.44.1001	Black	Black	1800±30
19.44.1005	White	White	800±15
19.44.1006	White	White	1800±30



PINOUT		
SF-04F	SF-82F	WIRE
E	E	YE/GN
L	L	BROWN
N	N	BLUE

⑧	Mini TIE	Brown paper tie	2PCS
⑦	Current Label	Stickers provided by customers	1PC
⑥	Current Label	Recycle logo stickers	1PC
⑤	Molding	Molding 40P LSOH(TPE)	AR
④	Housing	SF-82F One piece of inner frame,IEC-C13,Three plug, ABS	1PC
③	Terminal	SF-82F IEC C13 Three plug Female Straight insert Common of terminal,Brass yellow,0.75mm ²	3PCS
②	Terminal	SF-04F Europe 16A French Head, Riveted 0.75mm ² LSOH	1PC
①	CABLE	H05Z1Z1-F 3G 0.75MM ² LSOH(polyolefin resin)	1PC

Unless specified on the drawing, tolerances are per the follows:
 X. ±0.20 X° ±3
 .X ±0.10 .X° ±0.3
 .XX ±0.05



DRAW. NO	GFAC-S220288	TITLE	ROLINE GREEN Power Cable IEC320, 3P Ger-C13, LSOH		
CUSTOMER	--				
CUST' R P/N	--	DRAW	LQF	DATE	2023.09.05
SCALE	1:1	CHECK	2023.09.05 宋正伟	DATE	--
UNIT	mm	APPROVED		SHEET	1 of 1

No.	TITLE	DESCRIPTION	Q'TY
Cable Spec NO.	GFDY-C230056	Part Number	--

Note: RoHS2.0 Reach GP HF Other