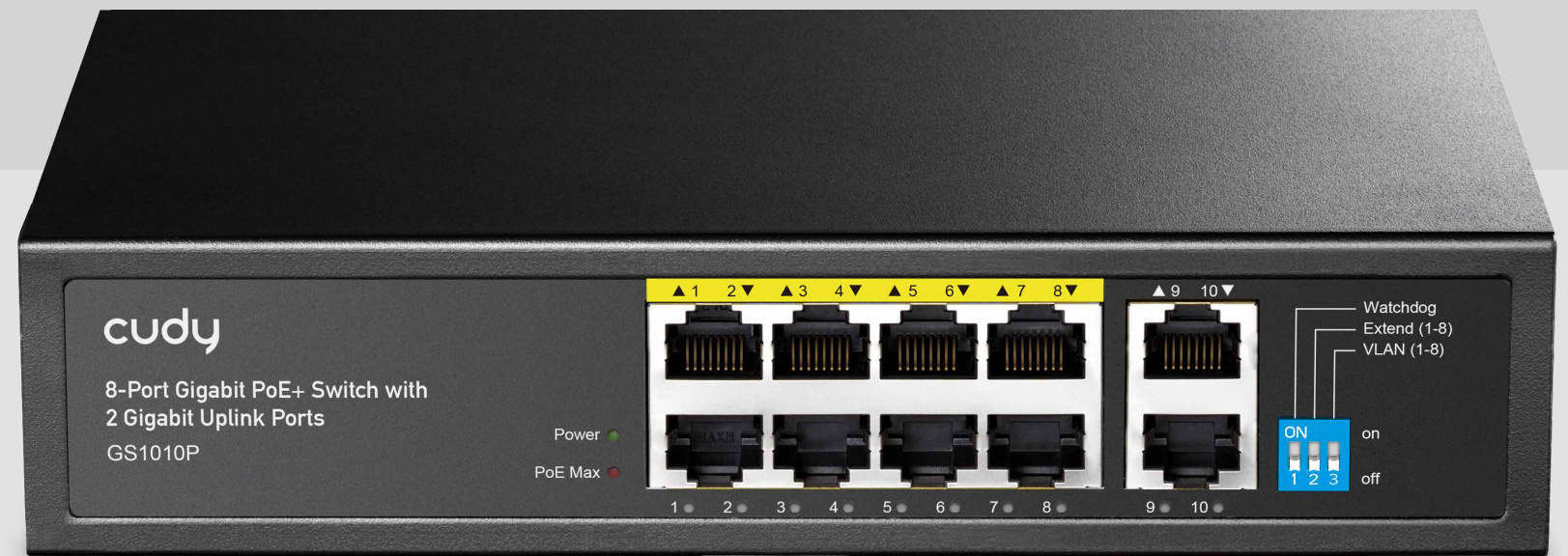





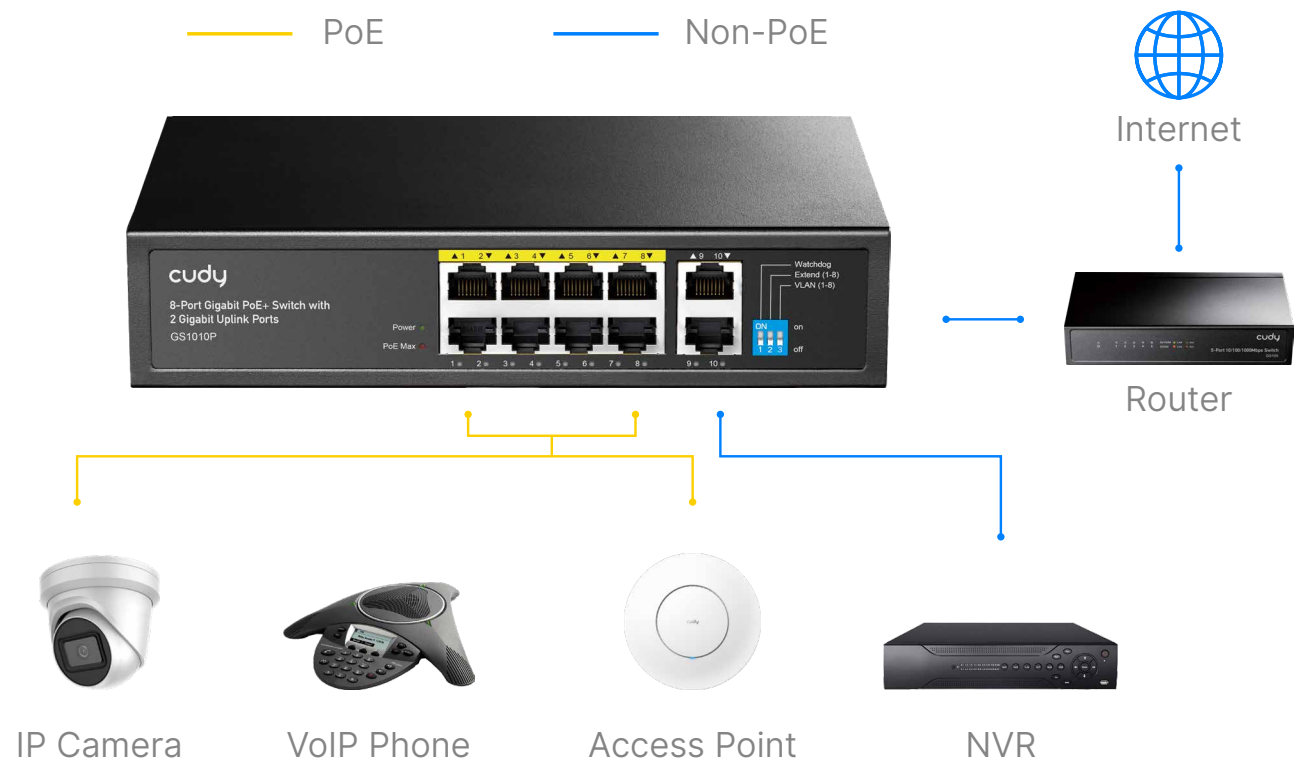
Model: GS1010P

8-Port Gigabit PoE+ Switch with 2 Gigabit Uplink Port



8 PoE+ Ports	120W Power Supply	 Watchdog
------------------------	-----------------------------	---

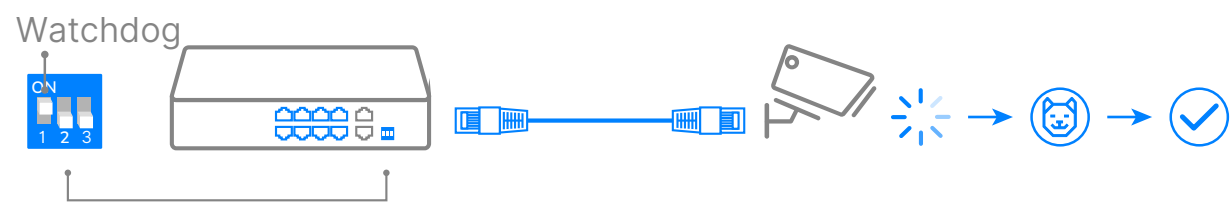
[Datasheet](#)



Cudy PoE switches connect and power various network devices seamlessly and efficiently. PoE Switches simplify network infrastructure by combining power and data into a single cable, eliminating additional power outlets and wiring.

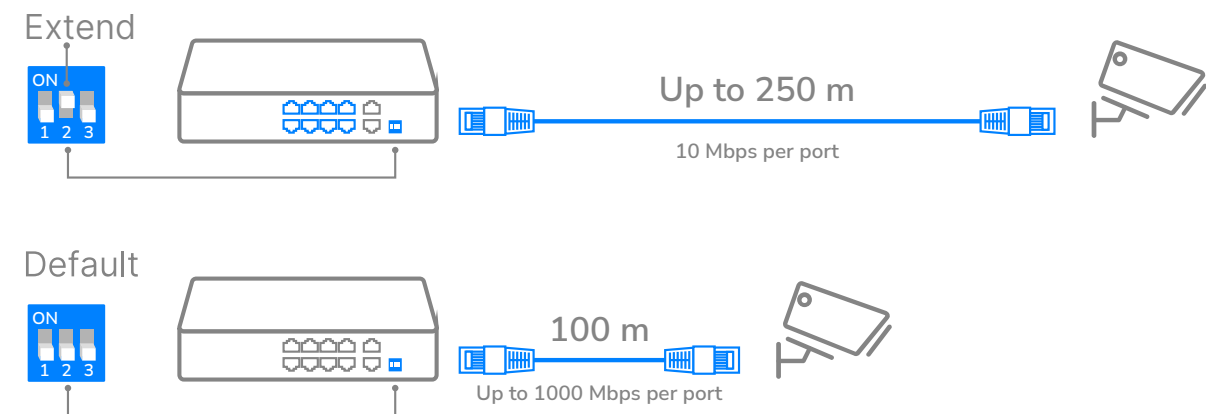
Watchdog for Improved Reliability

The PoE Watchdog monitors link activity on port 1~8 and attempts to reboot connected clients that have been inactive for 5 minutes, ensuring system stability. Do not turn it on for clients with online auto-upgrade feature.



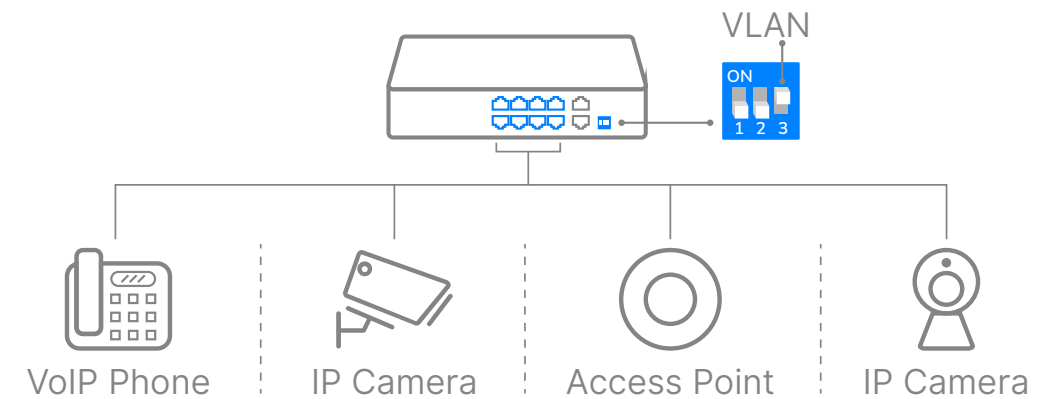
Extend for Long-Range Powering

Prolongs the PoE transmission distance of port 1~8 to a maximum of 250 m, enabling long-range surveillance installations.



VLAN Mode for Port Isolation

Separates clients into different subnets for improved security, preventing data leakage in case of client-side hacking.





Highlights

- 8× GbE with 802.3at/af PoE up to 30W each port
- 2× Uplink GbE
- Internal 120W Power Supply
- VLAN/Extend Independent Controls
- PoE Watchdog Auto Recover
- PoE Max LED
- Intelligent power management to prevent power overload
- Fanless Cooling System
- Desktop, Rack-Mountable with mounting kits
- 200×118×44 mm (7.87×4.65×1.73")

Specifications

Protocols	802.3 Protocols	802.3i 10 Mbps over Twisted Pair
		802.3u 100 Mbps over Twisted Pair
		802.3ab 1 Gbps over Twisted Pair
		802.3af PoE
		802.3at PoE
Advanced	PoE Watchdog	
	Multiple working modes, Intelligent power management	

Interfaces	Physical Buttons	Extend On/Off
		VLAN On/Off
		Watchdog On/Off
	PoE+ Ethernet Ports	8× GbE
	Uplink Ethernet Ports	2× GbE
	Extend Mode Ports	#1~#8
	VLAN Mode Ports	#1~#8
	LED	Power
		Link/ACT of Each Ethernet Port
		PoE Max Status
	Power Input	100-240V AC, 50/60 Hz
Performance	Copper Speed and Distance	Cat. 3 or higher cable: 100 meters at 10 Mbps
		Cat. 5 or higher cable: 100 meters at 100 Mbps
		Cat. 5e or higher cable: 100 meters at Gigabit
		Cat. 5e or higher cable: 250 meters at 10 Mbps
	Copper Speed and Distance Note	250-meter transmission is only available on the Extend Mode ports.
	Max Forwarding Rate	14.88 Mpps
	Max Switching Capacity	20 Gbps
	MAC Address Table	2048
	Jumbo Frame	16KB



Specifications

Power	Power Methods	AC
	AC	100-240V 50/60Hz
	Idle Power Consumption (W)	10
	Max Power Consumption (W)	120
Reliability	EMS	IEC/EN 61000-4-2, Level 3 ESD: Contact: 6kV; Air: 8kV
		IEC/EN 61000-4-5, Level 4 Surge: Power: DM 2kV, CM 4kV; RJ45: CM 4kV
		Grounding Methods
	Environment	Operating Temperature: -10~50 °C (14~122 °F)
		Storage Temperature: -40~70 °C (-40~158 °F)
		Operating Humidity: 10%~90% non-condensing Storage Humidity: 10%~95% non-condensing
Mechanical	Installation	Desktop
		Wallmount
	Casing Material	Metal
	Dimension	200×118×44 mm
7.87×4.65×1.73"		

Package Content

- GS1010P
- Power Cord
- Installation Guide