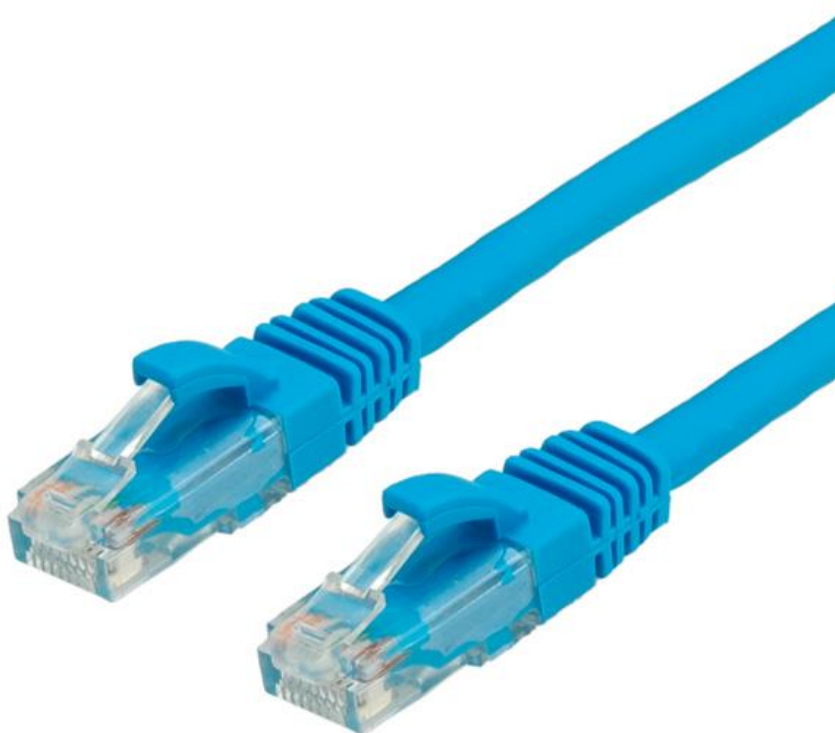




Datenblatt - Fiche technique - Data sheet

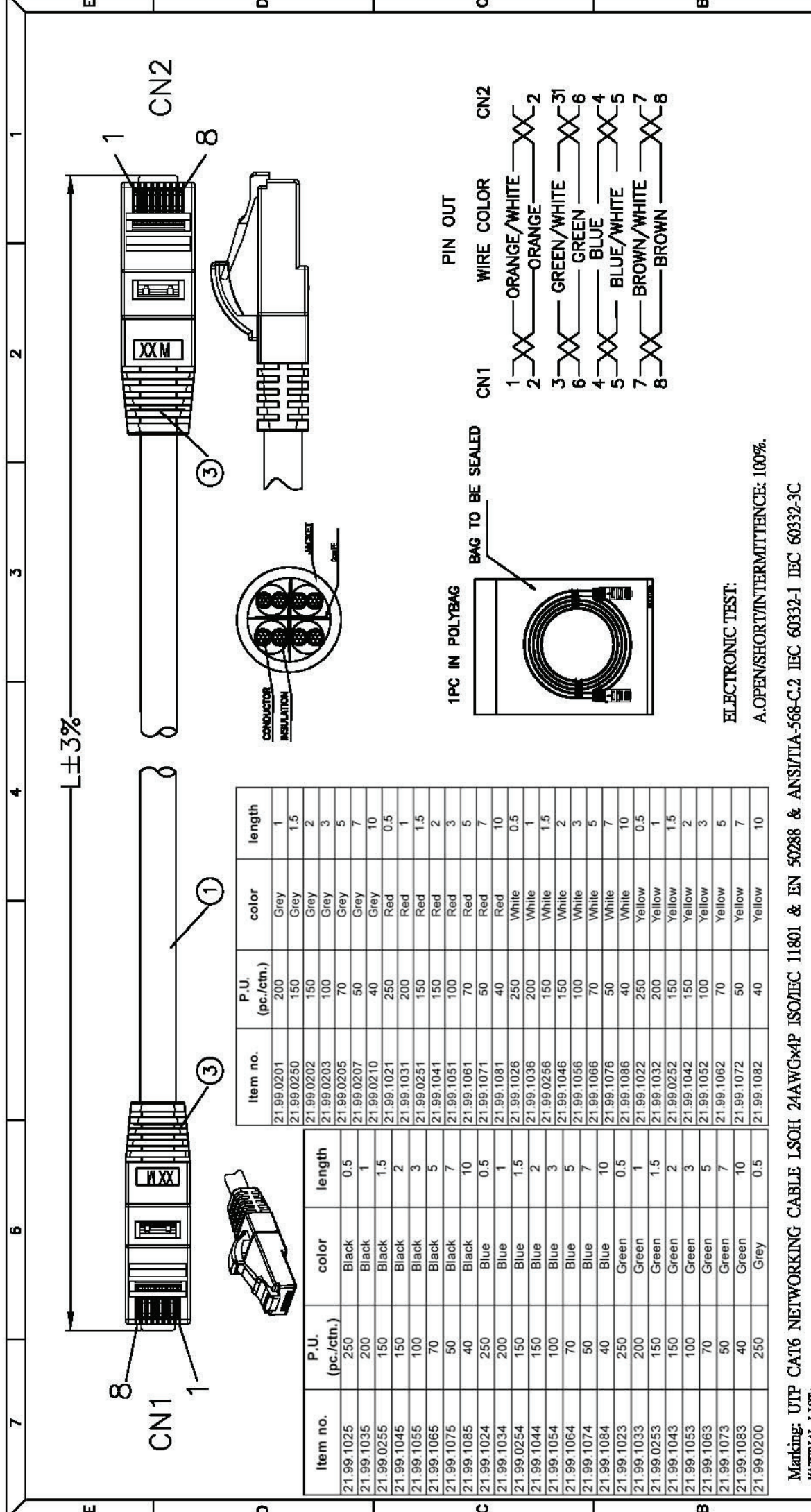
**21.99.1074**



VALUE UTP-Patchkabel Kat.6, LSOH, blau, 7,0 m

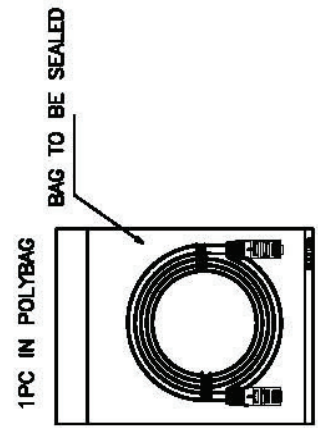
Cordon VALUE Cat.6 UTP LSOH, bleu, 7,0 m

VALUE UTP Cable Cat.6, halogen-free, blue, 7.0 m



PIN OUT

CN1	WIRE COLOR	CN2
1	ORANGE/WHITE	2
2	ORANGE	3
3	GREEN/WHITE	6
6	GREEN	4
4	BLUE	5
5	BLUE/WHITE	7
7	BROWN/WHITE	8
8	BROWN	



ELECTRONIC TEST:  
A.OPEN/SHORT/INTERMITTENCE: 100%.

Item no.	P.U. (pc./ctn.)	color	length
21.99.0201	200	Grey	1
21.99.0250	150	Grey	1.5
21.99.0202	150	Grey	2
21.99.0203	100	Grey	3
21.99.0205	70	Grey	5
21.99.0207	50	Grey	7
21.99.0210	40	Grey	10
21.99.1021	250	Red	0.5
21.99.1031	200	Red	1
21.99.0251	150	Red	1.5
21.99.1041	150	Red	2
21.99.1051	100	Red	3
21.99.1061	70	Red	5
21.99.1071	50	Red	7
21.99.1081	40	Red	10
21.99.1026	250	White	0.5
21.99.1036	200	White	1
21.99.0256	150	White	1.5
21.99.1046	150	White	2
21.99.1056	100	White	3
21.99.1066	70	White	5
21.99.1076	50	White	7
21.99.1086	40	White	10
21.99.1022	250	Yellow	0.5
21.99.1032	200	Yellow	1
21.99.0252	150	Yellow	1.5
21.99.1042	150	Yellow	2
21.99.1052	100	Yellow	3
21.99.1062	70	Yellow	5
21.99.1072	50	Yellow	7
21.99.1082	40	Yellow	10

Item no.	P.U. (pc./ctn.)	color	length
21.99.1025	250	Black	0.5
21.99.1035	200	Black	1
21.99.0255	150	Black	1.5
21.99.1045	150	Black	2
21.99.1055	100	Black	3
21.99.1065	70	Black	5
21.99.1075	50	Black	7
21.99.1085	40	Black	10
21.99.1024	250	Blue	0.5
21.99.1034	200	Blue	1
21.99.0254	150	Blue	1.5
21.99.1044	150	Blue	2
21.99.1054	100	Blue	3
21.99.1064	70	Blue	5
21.99.1074	50	Blue	7
21.99.1084	40	Blue	10
21.99.1023	250	Green	0.5
21.99.1033	200	Green	1
21.99.0253	150	Green	1.5
21.99.1043	150	Green	2
21.99.1053	100	Green	3
21.99.1063	70	Green	5
21.99.1073	50	Green	7
21.99.1083	40	Green	10
21.99.0200	250	Grey	0.5

Marking: UTP CAT6 NETWORKING CABLE LSOH 24AWG\*4P ISOMEC 11801 & EN 50288 & ANSI/ITA-568-C.2 IEC 60332-1 IEC 60332-3C  
MATERIAL LIST:

NO.	PKTS NAME	SPECIFICATION DESCRIPTION
①	CABLE	UTP [24AWG (CCA)*4P]*4 LSOH OD:6.0±0.3mm
②	RJ45 CONNECTOR	RJ45,8P8C,TWO FORK GOLD PLATED CONTACTS 30", RJ45 PLUG WITH NOSE
③	MOLDING	MOLDING LSOH
④	Package	1PCS/blank Polybag + sticker, 10pcs/Big bag

**Rotronic Co.,Ltd.**

**VALUE UTP Patch Cord, LSOH Cat.6**

REMARK NO	CHA.NO	SIGNATURE	DATE
DRAWN BY	WEHAYAN		
CHECKED BY			
AUDITED BY	MORGAN		
CRAFT		DATE	2012.11.12

SIGN	W.T	SCALE

PAGE 2 OF 2