



Quick Installation Guide



TK-204UK
H/W: V1.0R

Table of Contents

English	1
1. Before You Start	1
2. How to Install	2
3. Operation	4
4. Using the KVM Utility	5
Specifications	8
Troubleshooting	9

1. Before You Start



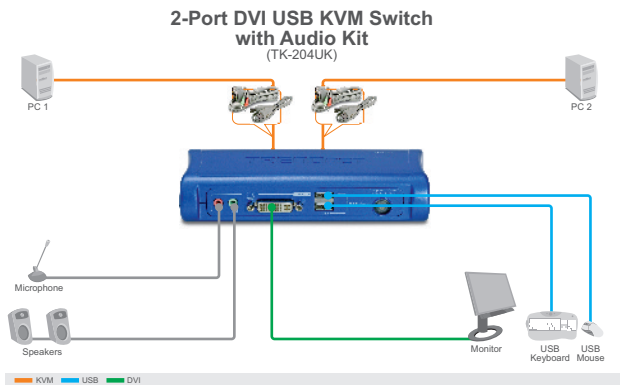
Package Contents

- TK-204UK
- Utility and User Guide CD-ROM
- Quick Installation Guide
- AC Power Adapter (5V DC, 2A)
- 2 sets of DVI Audio KVM Cables
- 2 sets of Type A to Type B USB Cables

System Requirements

- USB Keyboard
- USB Mouse
- DVI Monitor
- PC with DVI port
- Speakers (optional)
- Microphone (optional)
- Windows 98SE/ME/2000/XP/2003 Server/Vista, Linux, Mac.

Application



2. How to Install

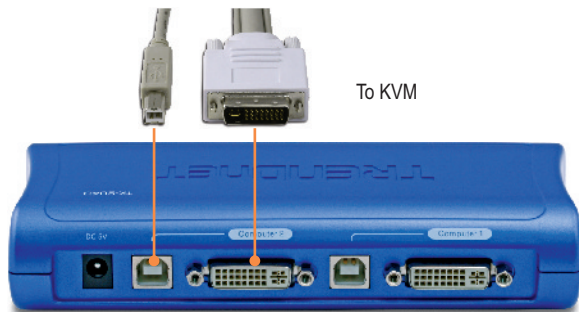
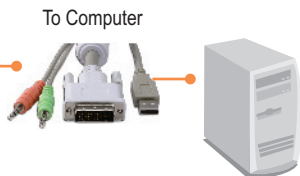
1. Turn **OFF** all computers.



2. Connect the shared USB keyboard, DVI monitor, USB mouse, speakers (optional) and microphone (optional) to the KVM switch's **Console Port**.



3. Use the KVM and USB cables to connect your PCs to the KVM Switch.



4. Connect the included AC Power Adapter to the KVM switch and then to a power outlet.



5. Turn **ON** the connected computers one-by-one and wait until each computer's desktop appears.

Your installation is now complete.

Register Your Product

To ensure the highest level of customer service and support, please take a moment to register your product Online at: www.trendnet.com/register

Thank you for choosing TRENDnet

3. Operation

Note: To switch between computers, you can use the face-panel buttons of the KVM Switch, a hot-key command sequence via keyboard, or the Client Software Utility (Windows only).

Push Buttons

Press the push buttons to switch between computers.

LED Indicators

Green LED light: Computer 1

Blue LED light: Computer 2



Hot-Key Commands

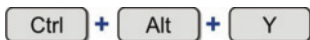
After pressing the ScrLk key, you have 2 seconds to press the ScrLk key again. You then have another 2 seconds to press a command key. A beep confirms that the KVM switch is in "Hot-Key" mode. If you do not press a key within 2 seconds, the switch will exit hot-key mode.

To switch between computers, press:



User Definable Hot Key Command

When using the below command, you must press on all the keys simultaneously.



Y represents any symbol as defined in the KVM Utility program. By default, Y = 1 for port 1 and Y = 2 for port 2. For information on using the KVM Utility program, see section 4 **Using the KVM Utility**.

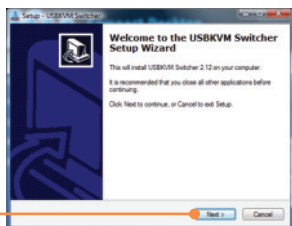
4. Using the KVM Utility

For Windows Users

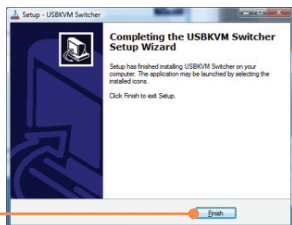
1. Click **Utility Install**.



2. Click **Next**. Then follow the **Setup Wizard** instructions.



3. Click **Finish**.



4. Double click on the KVM Utility icon.



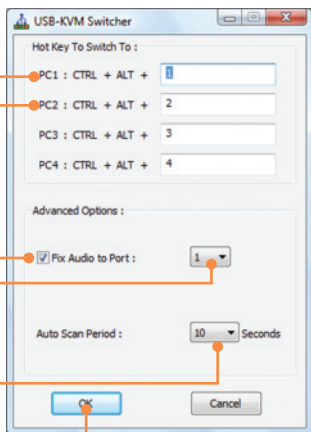
5. If you would like to modify the hot key, type in a character. You can enter any number, letter or symbol. Control keys such as Alt, Ctrl, Shift, CAPS LOCK, Tab, Esc, and Num Lock and function keys can not be used.
Example: CTRL + ALT + A.

6. Click on the check box for Fix Audio to a port and then select the port from the dropdown list.

7. Select a desired Auto Scan period (10~60). Options are in increments of 5 seconds.

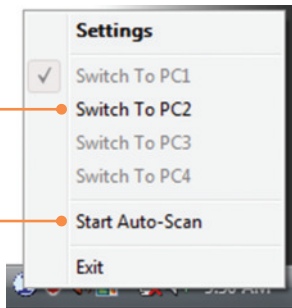
8. Once you made all desired changes, then click **OK**.

9. Right click on the KVM utility icon in the system tray. If your computer is connect to computer 1 port, you should see an icon with the number 1. If your computer is connected to computer 2, you should see an icon with the number 2.



10. Select the PC and you want to switch to.

11. Click **Start Auto-Scan** to start Auto-Scan. Right click the KVM Utility icon and select **Start Auto-Scan** to stop Auto-Scan.



Specifications

Management:	4 computers
Console Port Connectors:	1 x USB keyboard Type A 1 x USB mouse Type A 1 x DVI-I 15-pin Female 1 x 3.5mm Audio in/out jack 1 x 3.5mm Microphone in/out jack
PC Port Connectors:	2 x DVI-I 15-pin Female 2 x USB Type B
VGA Resolution:	1900 x 1200
Port Selection:	Push Button and Hot-Key Commands
LED:	PC 1 Active (Green) ; PC2 Active (Blue)
Keyboard State:	Saved and restored
Auto-Scan Intervals:	10 ~ 60 seconds
Power:	External AC Power Adapter : 5V DC, 2A
Dimensions:	154 x 65.5 x 27 mm
Weight:	935g (2.07lbs)
Temperature:	Operating: 0° ~ 40° C (32° ~ 104° F)
Humidity:	0%~90%, Non-Condensing
Certifications:	FCC and CE

Q1: Do I need to use the included external AC adapter?

A1: You must use the included external AC adapter with the TK-204UK KVM switch.

Q2: I have the KVM switch connected properly, but my keyboard and mouse don't work. What should I do?

A2: First, make sure the power adapter is plugged into your KVM switch. Second, make sure your USB ports are working properly by connecting your mouse and keyboard directly to the USB port computer. Third, once you confirm that the USB ports are functional, please reboot your computers, and try to use the KVM switch again. Fourth, if your computer is running Windows 98SE, you may need to download and install the USB hot fix. Please go to this link for download and installation instructions: <http://support.microsoft.com/kb/q240075>. Once the hot fix is installed, follow the installation instructions in Section 2.

Q3: Can I connect or disconnect the KVM cables while the computers are turned on?

A3: Yes, you can connect or disconnect the KVM cables while the computers are turned on, because the interface is Hot-Pluggable.

Q4: Will the KVM switch restore the keyboard settings between computers?

A4: Yes, the KVM switch will restore the keyboard settings when switching between computers. (i.e.: Caps Lock, Num Lock, etc.)

Q5: How do I switch from one computer to another with the KVM switch?

A5: You can switch computers by pressing the Push Buttons on the KVM switch or using the Hot Key commands. Go to Section 3 Operation for more information.

If you still encounter problems or have any questions regarding the TK-204K, please contact Trendnet's Technical Support Department.

Limited Warranty

TRENDnet warrants its products against defects in material and workmanship, under normal use and service, for the following lengths of time from the date of purchase.

TK-204UK - 2-Year Warranty

If a product does not operate as warranted above during the applicable warranty period, TRENDnet shall, at its option and expense, repair the defective product or part, deliver to customer an equivalent product or part to replace the defective item, or refund to customer the purchase price paid for the defective product. All products that are replaced will become the property of TRENDnet. Replacement products may be new or reconditioned.

TRENDnet shall not be responsible for any software, firmware, information, or memory data of customer contained in, stored on, or integrated with any products returned to TRENDnet pursuant to any warranty.

There are no user serviceable parts inside the product. Do not remove or attempt to service the product by any unauthorized service center. This warranty is voided if (i) the product has been modified or repaired by any unauthorized service center, (ii) the product was subject to accident, abuse, or improper use (iii) the product was subject to conditions more severe than those specified in the manual.

Warranty service may be obtained by contacting TRENDnet office within the applicable warranty period for a Return Material Authorization (RMA) number, accompanied by a copy of the dated proof of the purchase. Products returned to TRENDnet must be pre-authorized by TRENDnet with RMA number marked on the outside of the package, and sent prepaid, insured and packaged appropriately for safe shipment.

WARRANTIES EXCLUSIVE: IF THE TRENDnet PRODUCT DOES NOT OPERATE AS WARRANTED ABOVE, THE CUSTOMER'S SOLE REMEDY SHALL BE, AT TRENDnet'S OPTION, REPAIR OR REPLACEMENT. THE FOREGOING WARRANTIES AND REMEDIES ARE EXCLUSIVE AND ARE IN LIEU OF ALL OTHER WARRANTIES, EXPRESSED OR IMPLIED, EITHER IN FACT OR BY OPERATION OF LAW, STATUTORY OR OTHERWISE, INCLUDING WARRANTIES OF MERCHANTABILITY AND FITNESS FOR A PARTICULAR PURPOSE. TRENDnet NEITHER ASSUMES NOR AUTHORIZES ANY OTHER PERSON TO ASSUME FOR IT ANY OTHER LIABILITY IN CONNECTION WITH THE SALE, INSTALLATION MAINTENANCE OR USE OF TRENDnet'S PRODUCTS.

TRENDnet SHALL NOT BE LIABLE UNDER THIS WARRANTY IF ITS TESTING AND EXAMINATION DISCLOSE THAT THE ALLEGED DEFECT IN THE PRODUCT DOES NOT EXIST OR WAS CAUSED BY CUSTOMER'S OR ANY THIRD PERSON'S MISUSE, NEGLIGENCE, IMPROPER INSTALLATION OR TESTING, UNAUTHORIZED ATTEMPTS TO REPAIR OR MODIFY, OR ANY OTHER CAUSE BEYOND THE RANGE OF THE INTENDED USE, OR BY ACCIDENT, FIRE, LIGHTNING, OR OTHER HAZARD.

LIMITATION OF LIABILITY: TO THE FULL EXTENT ALLOWED BY LAW TRENDnet ALSO EXCLUDES FOR ITSELF AND ITS SUPPLIERS ANY LIABILITY, WHETHER BASED IN CONTRACT OR TORT (INCLUDING NEGLIGENCE), FOR INCIDENTAL, CONSEQUENTIAL, INDIRECT, SPECIAL, OR PUNITIVE DAMAGES OF ANY KIND, OR FOR LOSS OF REVENUE OR PROFITS, LOSS OF BUSINESS, LOSS OF INFORMATION OR DATA, OR OTHER FINANCIAL LOSS ARISING OUT OF OR IN CONNECTION WITH THE SALE, INSTALLATION, MAINTENANCE, USE, PERFORMANCE, FAILURE, OR INTERRUPTION OF THE POSSIBILITY OF SUCH DAMAGES, AND LIMITS ITS LIABILITY TO REPAIR, REPLACEMENT, OR REFUND OF THE PURCHASE PRICE PAID, AT TRENDnet'S OPTION. THIS DISCLAIMER OF LIABILITY FOR DAMAGES WILL NOT BE AFFECTED IF ANY REMEDY PROVIDED HEREIN SHALL FAIL OF ITS ESSENTIAL PURPOSE.

Governing Law: This Limited Warranty shall be governed by the laws of the state of California.

AC/DC Power Adapter, Cooling Fan, Power Supply, and Cables carry a 1 Year Warranty

Certifications

This equipment has been tested and found to comply with FCC and CE Rules.

Operation is subject to the following two conditions:

- (1) This device may not cause harmful interference.
- (2) This device must accept any interference received. Including interference that may cause undesired operation.



Waste electrical and electronic products must not be disposed of with household waste. Please recycle where facilities exist. Check with you Local Authority or Retailer for recycling advice.



NOTE: THE MANUFACTURER IS NOT RESPONSIBLE FOR ANY RADIO OR TV INTERFERENCE CAUSED BY UNAUTHORIZED MODIFICATIONS TO THIS EQUIPMENT. SUCH MODIFICATIONS COULD VOID THE USER'S AUTHORITY TO OPERATE THE EQUIPMENT.

ADVERTENCIA

En todos nuestros equipos se mencionan claramente las características del adaptador de alimentación necesario para su funcionamiento. El uso de un adaptador distinto al mencionado puede producir daños físicos y/o daños al equipo conectado. El adaptador de alimentación debe operar con voltaje y frecuencia de la energía eléctrica domiciliar existente en el país o zona de instalación.



Customer Support

Visit www.trendnet.com/support

Email:

support@trendnet.com



Europe (Germany • France • Italy • Spain • Switzerland • UK)

Toll Free Telephone: +00800 60 76 76 67

English/Espanol - 24/7

Worldwide

Telephone: +(31) (0) 20 504 05 35

English/Espanol - 24/7

Product Warranty Registration

Please take a moment to register your product online.

Go to TRENDnet's website at <http://www.trendnet.com/register>

TRENDnet[®]
20675 Manhattan Place
Torrance, CA 90501
USA